

HOSPITALITY

QUARTERLY MAGAZINE



Friends of Eastbourne Hospital
Proud to support the Eastbourne DGH

SPRING EDITION

January - April 2021

Number 161



**Friends of
Eastbourne
Hospital**

Help us help them help you

WELCOME TO

CAFFYNS

FOR NEW & USED CARS
IN THE SOUTH EAST



SKODA



SEAT



CAFFYNS
MOTORSTORE

www.caffyns.co.uk

SUNDAY 7TH FEBRUARY AT 7PM

Venue: Your Lounge

CHARITY ZOOM QUIZ

Fun for all the family including trivia, film clips, prizes & more!



SPECIAL LIVE PERFORMANCE FROM BGT FINALIST
STEVE HEWLETT & ARTHUR LAGER

SUPPORTING OUR

NHS

LIVE MAGIC FROM THE AMAZING JUSTIN SAUL!



LIVE MUSIC FROM THE BRILLIANT SWING SINGER TOM FITZPATRICK!



To sign up or buy raffle tickets, phone Don on 07791476669 or email a.mcphee05@hotmail.co.uk

PLUS A SPECTACULAR RAFFLE - £5 A TICKET!

CHOOSE YOUR OWN NUMBER - PRIZES DELIVERED TO YOUR HOME!
PRIZES INCLUDE: **M&S HAMPER**, TEA FOR TWO AT THE GRAND HOTEL, **WAITROSE HAMPER**, BOARD GAMES FROM WH SMITH, **WINE HAMPER**, FLOWERS FROM BEAU-K. **CHOCOLATE HAMPER**, LOTTERY PACKAGE

FoEH

ENTRY: MIN £8 DONATION PER TEAM TO THE FRIENDS OF EASTBOURNE HOSPITAL

https://uk.virginmoneygiving.com/Eastbourne_Zoom_Quiz

FoEH

KINDLY SPONSORED BY...



Stephen Rimmer LLP
SOLICITORS

 **VISICKCARS**




TOWN PROPERTY



Eastbourne Motoring Centre Ltd
"We're not number one, you are!"

Vauxhall and Suzuki new
& used car Sales & Service



VAUXHALL



Motability



PLUS over 200 used cars and vans
all makes and models available

 www.eastbourneusedcars.co.uk
View on line and visit on site

Hospitality Magazine readers Service Offer!

**Interim Service
with MOT test**

**NOW ONLY
£149.00**

**Full Service
with MOT test**

**NOW ONLY
£199.00**

**Major Service
with MOT test**

**NOW ONLY
£249.00**

FREE local collection and delivery ▪ FREE wash and vac with every service

**FREE
MOT
FOR LIFE**

CLAIM YOUR FREE MOT TEST FOR LIFE
WHEN YOU HAVE YOUR VEHICLE
REGULARLY SERVICED WITH US

Eastbourne Motoring Centre Ltd

Cavendish Bridge, Eastbourne BN21 3SE

01323 720681

www.emcgroup.co.uk

Contents

Page		Page	
	Caffyns Advert	15	Virtual Art Exhibition
1	Quiz Advert	16	Right at Home advert
2	Eastbourne Motoring Centre advert	17	Chairman's Annual Report
3	Contents, Dates For Your Diary	18	Chairman's Annual Report
4	Committee	19	Chairman's Annual Report
5	Chairman's Report, John Surtees	20	Chairman's Annual Report
6	Hankham Hall, Barry & Co adverts	21	Chairman's Annual Report
7	Fundraising	22	Chairman's Annual Report
8	Ocklynge Manor & Tweed adverts	23	Chairman's Annual Report
9	News from the Office, Marmalade	24	Sunrise Advert
10	Earlsfield Court Advert	25	Shop Report
11	Open Gardens, Gifts and Donations	26	AGM Agenda, Fashion Show
12	Sussex Secretaries, Legacy adverts	27	Membership Form
13	Covid-19 Testing Machines	28	Gift Aid & Bankers Order Forms
14	Virtual Art Exhibition	29	We Collect



DATES FOR YOUR DIARY FOR 2021

- 7 February 2021 Zoom Quiz and entertainment
- 18 February 2021 AGM
- Open Garden Programme, to be confirmed in April's magazine

Hospitality is printed by:

TANSLEYS
PRINTERS LIMITED

High quality lithographic and digital printers T: 01323 891019
E: info@tansleysprinters.co.uk
www.tansleysprinters.co.uk

19 Broad Street
Seaford
East Sussex
BN25 1LS

Editorial Team
Editor and PR
Proofreading
4

Debbie Wicks
Joan and John Wilson



FRIENDS OF THE EASTBOURNE HOSPITAL

Registered under the Charities Act 1960 (220592) and affiliated to ATTEND
(formerly the National Association of Hospital and Community Friends)

Patron
BISHOP OF LEWES

EXECUTIVE

President
DR PETER NASH

Vice-President
VACANT

Chairman
DR HARRY WALMSLEY

Vice-Chairman
DR M LONSDALE

Treasurer
MR PETER SKILBECK

Assistant Treasurer
MR ROGER SMALLEY

Secretary
MRS SUE DUFFELL
MRS DEBBIE WICKS

Shop Manager
MRS SUE HITCHEN

Assistant Shop Managers
MRS TRACIE SHEPHERD
MRS RAI HITCHEN

Education Officer
MR PETER RIMINGTON

Friends of the Eastbourne Hospital, District General Hospital, Kings Drive,
Eastbourne, East Sussex, BN21 2UD Tel. No. 01323 438236
e-mail: esh-tr.friendsdgh@nhs.net www.friendsdgh.org.uk

Committee Members

Mrs S Boyce-Sharpe, Mrs A Caffyn MBE, Mrs R Cameron, Mrs T Hamblin,
Mr A Holter, Mrs C Lock, Mr H Parker, Mrs B Phillips,
Mr G Stone, Mrs G Woolley

Hon Solicitor: Mrs C Busuttil

Auditors: Watson Associates, Chartered Accountants

CHAIRMAN'S REPORT

I would like to wish you all a happy New Year and I'm sure that you, like me, are hoping that it's going to be a better one for us all. With the vaccine now being rolled out to thousands of people every day, there is hope that in a few months' things may be more 'normal'.

As you know, our fundraising has been very badly affected by the pandemic but some events are still happening virtually, such as last November's Art Exhibition and Don McPhee's online quizzes. I would encourage you to enter the next quiz, which is coming up at 7 pm on Sunday 7 February 2021. Information on how to enter is on the first page of this magazine. Entry is by donation and it really is an entertaining evening, so do please join in.

We are holding our AGM on 18 February at 2 pm. This will also be an online event that you are very welcome to join. Please contact the office if you would like a link to the meeting, which will be held on Zoom. If you have any questions that you would like to put to us, please let the office know by Wednesday 10 February 2021. My AGM report is on pages 17 - 23 and you will also find it on our website.

We are all so very grateful for the incredible work being done by our NHS colleagues and the Friends are proud to be supporting them at this very difficult time. If you would like to *help us, help them, help you* we would welcome your support.

Stay safe during this third lockdown.

Harry Walmsley

REMEMBERING JOHN SURTEES

We are sad to report that John Surtees passed away in January. John was Vice President of the FoEH for many years and he and his wife, Sheila, were active supporters of the charity; Sheila organised Flag Week, one of the main annual fundraisers in years gone by.



John was a Consultant Pathologist in Eastbourne, long before the Eastbourne DGH was built. As well as his NHS work, John was an enthusiastic local historian. He led walks around the Old Town area of Eastbourne, telling stories of the eight hospitals that the DGH eventually replaced. He wrote several books including those on St Mary's and All Saints hospitals and one about Beachy Head.

WILL WRITING SERVICE

Usual fee per Will £145 plus VAT

Free Wills Brochure available on request
(Lasting Powers of Attorney from £235 + VAT)

Barry & Co
SOLICITORS

Bay Terrace, Pevensey Bay, East Sussex BN24 6EE

(01323) 766370 or 768382

Contact: info@barryandco.org

*No obligation legal advice on initiating
Probate and Estate Administration*

Hankham Lodge

Residential Care Home

Hankham Hall Road, Westham, Pevensey BN24 5AG



*A delightful home from home
personally run by Mr & Mrs P Sims*

01323 766555

info@HankhamLodge.com

FUNDRAISING

We would like to thank everyone who sent in donations in lieu of sending Christmas cards. Many of these, including some substantial amounts, were received anonymously so we haven't been able to acknowledge them and thank the donors personally. There are also many people who send regular seasonal donations, sometimes in memory of lost loved ones or in appreciation of care that they or their family have received.

Karen Kelly and her partner, Roger Booth, donated £75 in lieu of a Christmas present for her half-brother and his wife, Ken and Liz, who live in Sidmouth and Ken and Liz kindly reciprocated! We would like to thank them all for acting on the idea of a donation in lieu of presents and for choosing the Friends to be the beneficiary.

We would also like to thank John and Jean Taylor, who along with Jane and Malcolm Webster, organised a Covid-19 secure gala lunch before Christmas for about 50 guests at the Langham Hotel and donated £135 from the raffle to the Friends.

The Friends were delighted to receive £589.17 from the Paypal Giving fund, and a further £64.38 from Amazon Smile, which continues to be a regular generator of donations.

Don McPhee and his daughter Abby held another very enjoyable Zoom Quiz in December raising more than £1,000. Please join them and us for the next quiz on the 7 February at 7 pm. See page 1 for details on how to enter your team – whether that's only one of you or several team members, it's a good fun, entertaining evening.



Cheryl Dufton, who used to work on cruise liners as a singer, raised money for the Friends by posting a video of herself singing some well-known, uplifting songs each evening through the second lockdown before Christmas, raising a grand total of £1,435. We know there are other imaginative online events that people in the local

community have done over the last few months. If you have an original idea of something you would like to arrange on our behalf, do let us know and we can help you with publicity.

Due to the current circumstances we were not able to hold our usual Free Wills month last year, but we hope we will be able to get the support of local solicitors to once again offer this later in the year.

Bed & Breakfast from £60

OCKLYNGE MANOR



Mill Road, Eastbourne BN21 2PG
www.ocklyngemanor.co.uk
ocklyngemanor@hotmail.com
Tel: 01323 734121

“TWEED”

The Emilie Galloway Home of Rest

Manager: Jacqueline Bradley



Situated near the Grand Hotel, local shops and the sea front, Tweed is a superior quality care home for 21 residents run by a charitable trust established in 1930. The trust seeks to keep its fees to a minimum and tailored to the needs of the resident, whilst providing a high standard of care and accommodation.

01323 733223

Email: info@tweedcarehome.co.uk www.tweedcarehome.co.uk
Tweed, The Emilie Galloway Home of Rest
8/10 Silverdale Road, Eastbourne BN20 7AL

NEWS FROM THE OFFICE

We would like to start by wishing everyone a healthy and happy new year from the office. Although we had hoped that we would be able to give you details of some fundraising events that we have got planned in this copy of the magazine, sadly that isn't possible. As we write this in another lockdown, we very much hope things may soon improve and that we can start making plans for the future. We so miss seeing all our regular visitors and supporters.

We are continuing to work reduced hours in the office, and at times working remotely, but any messages or emails will still be responded to within a few hours. Fingers crossed that some sort of 'normality' will be resumed before too long.

We would like to say a big thank you to everyone who has donated unwanted gifts to us for future events. These are very much appreciated and if any have a short shelf life we are able to offer them for sale in the shop. It has been decided that we will not have a Summer Raffle again this year as it doesn't feel appropriate at the moment to ask local businesses for their support when they have so much to deal with themselves.

It was a pleasure to be able to help Ann Caffyn with the Friends first virtual art exhibition. We thank Ann for her perseverance in ensuring this went ahead and all the artists that supported it. We are also grateful to Don McPhee for the Zoom quizzes that he organises for the Friends. These are very popular with the local quizzing community and have raised a considerable sum over the pandemic. Don't miss the next one on 7 February; all the details are on the advert on page 1.

So we end this report with the hope that by the time you see your next magazine it is full of details of events that we are arranging and that we have all been vaccinated and able to see our friends and families more freely. In the meantime, please keep yourselves safe.

MARMALADE FOR SALE



Many of you are fans of the wonderful, homemade marmalade that is sold at our Open Gardens. We are delighted to let you know that Rosemary Cameron, our Trustee and marmalade making expert, has made 108 more jars costing £3 each. If you would like to buy a few please let us know and we will put you in touch with Rosemary.



EARLSFIELD
COURT
CINNAMON LUXURY CARE



Don't Face 2021 Alone

Enjoy reassurance, safety and companionship
at Earlsfield Court Care Home

At Earlsfield Court, we believe it is possible to lead an active, fulfilling life after a diagnosis of dementia. Our trained team celebrates the uniqueness of every individual through the specialist care, activities and living experiences they deliver. With patience, empathy and compassion, they uphold the dignity and wellbeing of our residents whilst offering support to family and friends.

Call **01424 863 497** for more information or see our
website: www.cinnamoncc.com/earlsfield

Residential Care | Dementia Care | Short Stays



Luxury Care Home in Bexhill-on-Sea

Earlsfield Court Care Home, Brooklands Road, Little Common, Bexhill-on-Sea, TN39 4FQ
e: earlsfield.haa@cinnamoncc.com w: cinnamoncc.com/earlsfield

OPEN GARDENS

We are already getting enquiries about our open garden programme for 2021 and are very hopeful that we will be able to go ahead after the disappointment of last year. We do have the basis of a programme in place although we are waiting for things to be more certain. We hope to include the programme in the April edition of Hospitality.

Visiting the gardens may be a little different as we will at all times consider the safety of our visitors and volunteers and will comply with whatever guidelines are in place at the time. We strongly advise you to check on our website or ring the office before visiting.

We are also looking for some more people to join our volunteer team. Maybe your interest in gardens was re-ignited during lockdown or you are looking for a way to support the Friends. If you are interested or would like to find out more please contact the office for an informal chat. When things are clearer we will be arranging an online meeting for volunteers.

GIFTS AND DONATIONS

Donations in lieu of Flowers

During the past three months we have received with gratitude donations totalling £3,091.64 in memory of: Sharon Adams, David Anderson, Robert Clarke, Martin Etchells, Doreen Stacey, Alan Wingrove and William Woods

Legacies

During the past three months we have received with gratitude, legacies from the estates of: Myrtle Helliwell, Peter and Muriel Sayer and Thelma Turkentine

Recently agreed gifts to the Eastbourne District General Hospital

Donations to wards open on Christmas day	£ 3,060
Donation to medical library	£ 3,000
Annual donation to Radio DGH	£ 500
Shockwave machine for Podiatry/MSK	£11,995
Replacement air conditioning for Radio DGH	£ 4,670
From Covid-19 appeal, enhancements to staff rest areas	£10,000
Total	£33,225

SUSSEX SECRETARIES

DO YOU NEED SECRETARIAL HELP
FOR YOUR BUSINESS OR IN YOUR HOME?

- Audio transcription
- Correspondence
- CVs (incl advice & interview techniques)
- Data entry & spreadsheets
- Mail merge
- PowerPoint presentations
- Image editing/retouching
- Filing systems (Remotely or on-site at your home or office)
- Invoicing
- Minutes
- Reports & Theses
- Shorthand
- Website set up
- Photography/Headshots



If you do not see the service you require listed above please call us & ask

Tel: 01424 892463

Mobiles: 07940 886123 or 07985 192059

Email: corinnemgibbons@gmail.com

or visit our website www.sussexsecretaries.co.uk

If you would like to leave a legacy in support of
FRIENDS OF EASTBOURNE HOSPITAL
please ask your Solicitor to include it in your Will

*Leaving a gift to charity in your Will is
an amazing way for your generosity
to last beyond your own lifetime*

Friends Office staff will be pleased to provide additional information

The Friends Office, Eastbourne DGH, Kings Drive, EASTBOURNE BN21 2UD

01323 438236

email: esh-tr.friendsdgh@nhs.net

www.friendsdgh.org.uk

NEW COVID-19 TESTING MACHINES OPERATIONAL

New Covid-19 testing machines have become operational at East Sussex Healthcare NHS Trust which will significantly increase testing capacity and speed up the turnaround time for test results.

A high volume testing machine called a PerkinElmer, is now operational and has the potential to undertake around 500 nose and throat swabs tests a day, significantly reducing the number of tests sent to an offsite laboratory. Until recently the hospital's existing in-house technology was able to screen up to 40 Covid-19 samples a day with the remaining tests sent to a laboratory in Southampton. A low volume rapid turnaround testing machine is also now operational providing single test results in under an hour and is operational 24/7.

Dr Joel Newman, Laboratory Director and Clinical Lead for the Sussex Pathology Network, said: "These are game changers for the Trust. They significantly speed up our turnaround time and capacity for Covid-19 testing. With a quicker diagnosis, we know which wards our patients need to go to so we can provide the best care for them in the right place. This rapid diagnosis will help our teams to plan for surgery and in some cases help with more difficult discussions on the next steps of patient care. Previously, our in-house testing was very limited with the vast majority of tests going to Southampton with the obvious delay in the physical transportation of the sample to the laboratory."



After being installed on site by a team of engineers, the new machines have been verified, with screening results cross-referenced against the existing technology. At the same time pathology staff have been trained to use the new machines.

Dr Newman added: "Our turnaround times will be within 24 hours for all swabs, faster for new admissions, enabling us to identify positive patients sooner and act upon on the result. This will helps us minimise the opportunity to spread Covid-19 on to other people and allows us to contain it. We were previously sending tests away which meant it could be up to 48 hours before we knew the results."

THE 15th ANNUAL ART EXHIBITION

This year, owing to the Coronavirus Pandemic, we decided to hold a Virtual Art Exhibition, which was online for three and a half weeks during November. To set this event up was a huge challenge for the Friends Office. Debbie was able, with her brilliant creative skills and the help of the Trust, to present the Art Show. A total of 196 paintings were on display and for sale on the Friends website. This major achievement received many compliments from the local art community and our supporters.



Sue was kept very busy in the office expertly making sure the administration ran smoothly while also keeping a note of the bids for the Silent Auctions painting. This beautiful, local seascape painting was kindly donated by Christopher Osborne and was displayed in the window of Eastbourne Framers, opposite Eastbourne station, thanks to the owner, Lucy Newport. The painting caught the eye of a passer-by, who already owned one of Christopher's paintings and she

submitted the winning bid of £550. We would like to thank Christopher, Lucy and the winner for their very generous support.

Nigel Greaves judged the 'Best in Show' picture. The winner was Robert Stevens for his stunning painting of the Red Arrows, Tornado Manoeuvre. In a covid-safe way, with both of us wearing masks, I presented the Chatfields Cup to Robert in his back garden!

We were so thrilled 42 local artists entered their works of art and that ten were sold. The artists's kind



support, together with donations and the Silent Auction, meant we raised £3,084 towards our current Special Project, to Make Radiology Digital at the Eastbourne DGH.

I am extremely grateful to Sue and Debbie for all the time and trouble they took to ensure the smooth running of the event. I would also like to thank the Art Planning Team: Hugh Parker, John Gross, Anne Williams, Jackie Hurwood, Cathy Lock and Elaine Browne for all their ideas and encouragement to support the event.

All being well, we hope to accept St Andrew's Prep's invitation to stage the 2021 Autumn Art Exhibition in their newly redecorated gym.

With best wishes for a healthy 2021,

Ann Caffyn

SETTING UP THE VIRTUAL ART EXHIBITION

Rather than cancel our Annual Art Exhibition, due to the Covid-19 restrictions that we all had to adapt to in 2020, we took the exhibition online and made it a virtual event.

Our planning started in Sue's garden in September, when she and I met with Hugh Parker, a FoEH Trustee and Art Exhibition Planning Committee member. We came up with a plan that we had no idea how to implement but we were determined to give it our best shot.

Setting up the virtual exhibition was a new and testing experience for the Friends Office and entering paintings brought new challenges for many of our artists. With help and support from our IT guru at the Trust, Rob Toth, we found a free programme that enabled us to put on an exhibition that we were very pleased with. The artists emailed photographs of their pictures to the office and we placed them in a standard format, with all the relevant information attached, and uploaded them to the website. It was a long, slow process with many time-consuming stages, but when we got into the swing of it, it wasn't too tricky and gave us something positive to 'get our teeth into'.

We do hope that you were able to visit the exhibition and see the wonderful paintings on display. We've had some very positive feedback and also have some learning points, if we decide to have a virtual exhibition in the future; hopefully because we want to, not because we have to!

Debbie Wicks

This year
we will not be taking
Christmas Cards
Please put them in your
recycling bin
Thank you



Quality care and support in your home
from 1 hour visits to 24 hour Live-in care

Our services include:

- Companionship
- Housekeeping
- Medication Support
- Washing and Dressing
- Personal Care
- Dementia Care
- End of Life Care
- Transport and Errands
- Post-operative Support
- Live-in Care

And much more...



**CONTACT US FOR A FREE CARE ASSESSMENT
FOR YOU OR YOUR LOVED ONE**

☎ **01323 414 658**

✉ eastbourne@rightathome.co.uk

🌐 www.rightathomeuk.co.uk/eastbourne



**Dementia
Friends**

An Alzheimer's Society initiative

Inspected and rated

Good



CHAIRMAN'S ANNUAL REPORT FOR 2020

Distinguished guests, Ladies and Gentlemen; it is with great pleasure that I give my annual report on the activities of the Friends of Eastbourne Hospital. Although our financial year runs from September 1st 2019 until 31st August 2020 I will, as I have done in previous years, talk about events up until the AGM. But as this year the AGM has been delayed due to the Covid-19 pandemic I will talk about activities up until Christmas 2020, four months after the official end of the Friends financial year.

As I announced at the last AGM, the Bishop of Lewes, the Right Reverend Richard Jackson, left Sussex in January 2020 to become the 106th Bishop of Hereford. However, I am delighted to say that the new Bishop of Lewes, the Right Reverend Will Hazlewood, has agreed to take on the role as our Patron and I am sure you will join me in wishing him well in his role as Bishop.

As has been customary, I will mention some of the formalities before talking about the specific events of the year that have been overshadowed by the Covid-19 pandemic. The aims and objectives of the Friends of Eastbourne Hospital have remained much the same in the 72 years since it was formed. I realise that these have been mentioned in previous Chair's reports but I think they are worth repeating. They can be summarised as follows:

- 1) To provide funds for extra services, equipment and amenities for patients and staff at Eastbourne DGH and the related community services and to make donations where the expenditure has been recommended by the NHS Trust, and has been approved by the Committee.
- 2) To encourage voluntary work in the hospital.
- 3) To provide a link between the hospital and community.

The Charity is managed by a Board of Trustees who are elected and, thereafter, re-elected at three year intervals at the Annual General Meeting. This year we have said goodbye to one of our trustees. Gilda Perry has, after many years of great work for the Friends, felt it was time to say goodbye. Gilda first started with the Friends many years ago, and was a trustee of the Friends for five years. Time for a rest for Gilda, although she has said she will continue to support and help at various Friends events. Our thanks go to Gilda for her years of support to the charity.

It is with great sadness that I also have to announce that John Surtees, who has been vice president for the Friends for many years, died in January. John was a great stalwart of the Eastbourne DGH during his clinical career and was a highly respected lecturer. His contributions to the Friends over many years will be greatly missed.

I don't think it will be a surprise to any of you that this past year has been like no other since World War 2. The Covid-19 pandemic has touched many of our lives and the lives of our friends and relatives. The loss of loved ones, the fear of catching the virus, isolation either voluntary or forced, and the inability to

cuddle our loved ones, have all been factors in our lives. This year has also had a big impact on the Friends and the fundraising we do. However it was not all doom and gloom and I will discuss this later in my report.

INCOME: Where do the Friends get their income from? Funds are raised for the Friends in a number of ways:

- 1) **Shops and Trolley Services**
- 2) **Legacies and in Lieu Donations for Flowers**
- 3) **Donations and Fundraising from the Eastbourne Population**
- 4) **Friends own Fundraising Activities**

I will go through each of these one by one, starting with the shops.

1) **SHOPS**

Until March 2020 the shops were once again doing a grand job with income projected to be better than ever. Then the first lockdown came. Visitors were not allowed in the hospital so the customer base fell dramatically and with many of our volunteers being of a certain age and having to stay away from the hospital, our shop incomes fell and some had to close - temporarily we hope.

a) **Two shops** - The main shop in the entrance to the Hospital, and a small outlet by the staff side entrance to the Hospital. With the first lockdown the main shop stayed open but with reduced hours. They have provided an unbelievable service throughout the year which I will talk about shortly. My thanks must go to Sue Hitchen, the shop manager, and all her team of staff and volunteers who worked tirelessly through the pandemic. Although the profits obviously have fallen this year, Sue and her team continue to make a good profit.

b) **A Flower Shop** – the Flower Shop was doing well but sadly in March had to close and remains closed at the time of writing this. Prior to lockdown plans were being made with the Trust to open a small outlet in the foyer of the hospital outside the main shop to sell flowers. For obvious reasons this is currently on hold but we are hopefully it will progress in the future and will, I am sure, improve flower sales.

c) **A café outside the Radiotherapy Unit** – again the café was going well making between £600 and £800 a month but sadly has been closed since March.

d) **The Trolley Services** – Trolley Services around the wards for the convenience of staff and patients who are unable to visit the other shops were also stopped in March but were able to restart in a reduced capacity in the autumn in “green” areas, places where Covid-19 patients are not present. However, at the time of writing I do not know whether these will be able to continue as the number of Covid-19 patients in the hospital reaches new high levels.

Again I cannot thank Sue Hitchen enough for all the hard work she puts in to all these ventures, much of it in her own time. Without her and her other staff members and the volunteers none of this success would be possible.

2) **LEGACIES** remain an unpredictable but very important source of income, particularly this year with our own fundraising so reduced. This year there has been over £200,000 left to the Friends for which, as always, we are incredibly grateful. Some of this has been left to specific departments such as ophthalmology and we are working with these departments in purchasing equipment they need. Many donations are also received **in lieu of flowers**, contributing £1000s throughout the year. We are very grateful to relatives who, in their time of bereavement, still think of us and we can assure them that all donations are gratefully received and make a significant contribution to our activities.

3) **DONATIONS**

Can I take this opportunity to thank all the individuals and organisations who have donated money for the general funds of the Friends over the last year. I will mention some of them here. Other specific donations I will talk about when I talk about our Covid-19 fund raising appeal and the role of the main shop later in my report.

General Fund Donations:

a) Seaford Golf Club Captain`s Charity	£5,461
b) Sale of the late John Powley`s artwork	£6,300.
Our thanks go to both Kris Powley and Barry Southon for organising this.	
c) Two nurses from cardiology raised running the Beachy Head marathon	£2,154
d) Lisa Harrison organised dinner	£1,000
e) Waitrose Community Matters	£333
f) Eastbourne Historic Vehicle Club	£350

There have been many other donations, some given anonymously. But all, however big or small, have been gratefully received and are hugely important to the work the Friends are able to do for the Hospital. I thank you all on behalf of the Friends for your donations whether you are mentioned in this report or not.

There are also other people who raise money in the community for the Friends. Collecting pots in the Community, especially Heaths Butchers in Old Town, raised about £ 2,140 in the financial year.

Regular sums from Recycle4Charity have been received from used cartridges, Paypal Giving fund, Amazon Smile, and the Eastbourne Borough Council lottery.

Simon and Carolyn Farrar have taken over the stamps from June Tickner who, after many years, had raised over £46,000 during her tenure. A hard act to follow but Simon and Carolyn have already had some very successful online sales.

FRIENDS FUNDRAISING ACTIVITIES

Sadly almost all our fundraising events since March have been cancelled. Before the lockdown there were only two events since the last AGM in November 2019. A quiz organised by Sue Hitchen and a dinner at the Raipur in February that raised £1,500.

Everything else was cancelled – Open Gardens, Battle of the Bottles, Tennis Tournament, Cream Tea and Summer Fair, Summer raffle, Sugar Ray Charity Golf Day, Christmas Coffee Morning, Spring Coffee Morning, Dine Around the World and the remaining quizzes.

However, due to the determination of Ann Caffyn and her committee, the **Art Exhibition** took place in October but this time virtually. I, along with others, wondered if it would work. But Ann was adamant it would and she was right. Although it did not make the Friends as much money as last year it still did very well raising over £3,000.

COVID-19 FUNDRAISING FOR STAFF

Once lockdown started in March last year it wasn't long before the hospital started to be overrun with Covid-19 patients. Some staff were working in areas they hadn't worked in before and living in the hospital at night doing extra shifts, putting their health and sometimes their lives, at risk. It was quite apparent that the staff needed support with food, drinks, PPE and electrical goods to store and cook food. The Friends already had the Beavon fund given to the Friends several years ago as a generous legacy to support staff. £10,000 from that fund was used to start a Covid-19 staff support fund and then the Friends went out to the community to raise money for this fund. The response was phenomenal. I will list some of these incredible donations but this is far from all of them. My sincerest apologies to those I don't mention:

- Sussex Masonic Charities Foundation £5,000
- Michael and Chris Owen distributed 10,000 appeal leaflets in Eastbourne and raised at least £4,600
- Peter Valentine walked 96 miles to celebrate his age £ 750
- Heart of South Racing – share of auction sale of horse £2,500
- On line quizzes:
 - Don McPhee £2,840
 - Paul Richards quiz £ 500
 - Jim Keeley £ 200
- Inner wheel of Sovereign Harbour £ 400
- Barry Southon digitalising old photos for community - ongoing
- Children:
 - Aston Downey's cake and book stall at home £ 842
 - Ellis Shehu sponsored 5 Km run £ 265
 - Katy and Louisa Connor cake and handcrafting items £ 281
- Hastings Direct £1,000

- £1000s more from people who wished to remain anonymous.

As well as this we put out an appeal for iPads so that patients could talk to their relatives at home, as visiting to the hospital was not allowed for obvious reasons. This appeal was initially for ICU but the response was so overwhelming from local businesses and individuals that the Trust was able to use them on many other wards. The extra ones were, with the permission of the donors, given to Care Homes for similar use. Personally, and on behalf of the Friends, I cannot thank these donors enough and I give my apologies to anyone I haven't mentioned by name. Rest assured every donation made a huge difference to what we could do for the wonderful staff of our great hospital. In total the Covid-19 fundraising made just over £55,000 - An astonishing amount.

How was this spent in supporting the staff?

- Fridges, microwaves, kettles, toasters, foldaway beds for various departments - £3,000
- Food, drinks of various sorts (some donated) - £1,000s
- Hand creams, Vaseline, lip balms, sudocrem, toothpaste, and various other personal items. When staff are wearing full PPE for hours on end their faces get sore, lips and hands crack so these small gestures make such a difference - £1,000s
- PPE – Face visors - £7,350. These were procured by the Medi Tech Trust who the Friends have worked with before and who purchased a similar number. If you remember Medi Tech donated £250K towards our Radiotherapy fundraising a few years ago.

There is still just over £30,000 in the Covid-19 Fund and with the current second peak the Friends have volunteered £10,000 towards making more rest areas for staff, both within the hospital and in the outside courtyards. This will include furnishings, white goods, and sheltered igloos in the courtyards for staff. I am still awaiting the final details from the Trust. Again the Friends have restarted the provision of some personal items to staff as well.

I said earlier that I would mention the role of the Friends shop in all this. Sue and her staff have been superb and ordered the personal goods, food and drinks through the Friends Shop. A phenomenal task but with Sue's contacts in the industries she was able to get orders in almost as soon as she asked for them and at very competitive prices.

Once again can I thank all involved in this Covid-19 Fundraising appeal? It once again shows the huge generosity of the people of Eastbourne towards the hospital and its staff.

What have the general funds been spent on?

As I mentioned earlier the Friends fundraising has been much reduced since March so the funds available to spend on the usual equipment in the financial year ending 31st August 2020 has been reduced. The figure is approximately £400K.

So how did the Friends spend these funds received? At the last AGM I said that the Friends had agreed to raise £500K for new state of the art patient monitors. However, shortly after the AGM the government announced extra funding for equipment, which meant the Trust would buy them. So as a result the Friends needed another major project. In discussion with the Trust it was agreed that the Friends would fundraise £430K to modernise radiology facilities by making it digital with all the advantages that has. Despite Covid-19 the Friends have almost reached that target but sadly several months later than planned.

However, the Friends have been able to provide, or agreed to provide, equipment to other departments as well as fundraising had been good for the first 6 months of the financial year and from generous legacies.

Here is some of the equipment the friends have bought:

• Facilities (chairs and tables)	£3,000
• Orthopaedics (passive motion machines)	£7,257
• Community Stroke Rehab (iPads and apps)	£1,307
• Psychiatry (yoga classes)	£1,802
• Stroke Unit – (recliner chair, FES machines)	£5,455
• Children`s ward (Vein viewer, iPads and games, ECG)	£11,300
• Physiotherapy (microstim, tilt chairs)	£5,800
• Community Dental (wheelchair platform)	£31,150
• Intensive Care Unit (Omnicell drug cupboard)	£23,634
• Moving and Handling (one legged stools)	£4,100
• Nutrition & Dietetics (Bioelectric Impedance scales)	£7,395
• Frailty (ECG machine)	£1,224
• Firlle Unit (2 ECG machines)	£5,487
• Coronary Care (warming cabinet)	£2,560
• Podiatry (wheelchair platform)	£29,700

Welcome packs for patients who come into hospital urgently are still being provided and contain a toothbrush, toothpaste, and a few other essential items for care. These are purchased by the Friends and are very much appreciated by patients and often result in donations to the Friends as a thank you.

At Christmas the Friends were still able to give donations to wards and departments that are working on Christmas day and these are used for gifts for patients or Christmas food for the ward. The library also gets a donation for books, as does Radio DGH to help it keep running.

The Friends have continued this year to provide **Educational Bursaries** for up to £2,000 per year from a legacy left a few years ago to the Friends, not for equipment, but "for the benefit of staff at Eastbourne DGH". This year the trustees have given out two bursaries prior to the pandemic. We hope that we have more applications to choose from in the coming year.

Sadly the Friends were unable to hold its usual three educational talks for the public due to Covid-19 but we hope to resume them in the months ahead.

THE FUTURE

So what is the major project the Friends of Eastbourne Hospital are supporting this year? As I have already said the fundraising for last year's project has not yet quite finished so no plans have been made. A lot will depend on when we can get back to normal. No discussions have been had about this with the Trust as yet but I do know that the Urology Da Vinci Robot, bought by the Friends in 2015, will need updating soon; so wait and see.

I am pleased to say that the Trust Chairman and CEO have continued to support the Friends. For this we are grateful as the efforts of the Friends are very much appreciated. The CEO, Adrian Bull, retired last September and I am sure you will join me in thanking him for all the support he gave the Friends and wish him a happy retirement. Also, we wish Joe Chadwick-Bell, the new CEO, every success and I am sure she will continue the support for the Friends.

I would like to thank all the trustees, Debbie and Sue in the office (they do the work of at least 3 people between them) and the shop management for all the hard work and support that they continue to give me as Chair of the Friends, which has made my role so much easier. It has been a tough year that no one could have predicted but without their support, none of this could have been achieved. However, my biggest thanks must go to you, the members of the Friends, volunteers and helpers, and the population of Eastbourne who so generously support us in all our endeavours. You make all this possible and without you none of this is achievable. It is an honour to be chair of this great organisation.

However, please can I make a plea for more volunteers to join us when this pandemic ends? We do not know how many of our current ones may decide not to return and without volunteers we cannot do what we do. Speak to your friends and relatives; however little time you and they can spare is very much appreciated.

It is impossible to pick out all individuals or else I would be here forever, but I have already mentioned a few. Can I apologise to anyone who has donated or raised money for the Friends, or given up their time to volunteer, who I have not personally mentioned? Please be assured your efforts are as much appreciated as those I have mentioned.

That concludes my review of the year. I am happy to answer any questions members may have. Please contact the Friends Office with your question by Wednesday 10 February 2021 and I will answer it at the AGM, which is on Zoom on Thursday 18 February 2021 at 2 pm. Again, please contact the Friends Office for a link.



Living well with dementia

At Sunrise we're dedicated to providing compassionate and personalised care to residents living with Alzheimer's, dementia or other forms of memory loss.

Our highly trained Memory Care Co-ordinators deliver a range of memory care approaches, tailored to each resident to improve their quality of life and live well.

Combined with freshly prepared, nutritious meals and individual activity plans, it's a place where residents can be happy and well-cared for.

Sunrise of Eastbourne
6 Upper Kings Drive,
Eastbourne, East Sussex
BN20 9AN

Call 01323 405838 or go
to SunriseEastbourne.co.uk
for more details.



13 December 2018

Residential, nursing
and dementia care home



SHOP REPORT

We are pleased that the shop has remained open throughout all the challenges that Coronavirus has brought with it and once again would like to thank Sue, Tracie, Rai and the volunteer team for all that they have done and continue to do for us in these difficult times. It is always good to hear how happy the volunteers are to come in and how it helps them and gives structure to their week.

As the shop is not open for quite as long as it usually is, due to the lack of visitors in the hospital, there are currently enough volunteers to keep things going, although we would be interested to hear from anyone who might like to be considered as a back-up, for occasional sandwich trolley rounds or for when things pick up again in the future.

We were sorry to say goodbye to Irene Hitchcock who has retired after over 20 years in the shop, to return to her roots in Scotland. She was encouraged to be a shop volunteer by a friend who worked at the hospital. Irene really enjoyed her time in the shop and made lots of friends. She said 'it was good to know I was making a difference' and like many of our volunteers got as much out of the experience as the Friends did. We wish her all the best for her future. If you would like to become a volunteer, please do get in touch.

All the sandwiches in the shop are now sourced from a local supplier and are proving very popular with the hospital staff, so much so, that an extra fridge has been bought to store them in.

There is a wide selection of nightwear in all sizes in the shop. If you can't see your size or quite what you want, please ask as there is not enough room for everything to be on display and there might be something that is perfect for you in the stockroom.

Our sewing army are still making the face coverings that are so popular and such good value at only £2 each. No-one expected that these would be needed for so long, so maybe yours are getting a bit tired from all the washing, or you just fancy a change. Do have a look at the selection when you are in the shop.

WANTED



Do you have any spare wool that could be donated to our army of knitters? If so, please bring it into the main shop and we will make sure that it is put to good use.

Thank you

**FRIENDS OF EASTBOURNE HOSPITAL
ANNUAL GENERAL MEETING 2020**

Thursday 18 February 2021 at 2 pm

To be held virtually – please contact the office for a Zoom link

AGENDA

1. Apologies for absence
2. Minutes of meeting held on 21 November 2019 and matters arising
3. Chair of Trustees Dr Harry Walmsley to present Report of the Executive Committee for year 2019/2020 (see pages 17-23)
4. Treasurer Peter Skilbeck to present Treasurer's Report* for the year ended 31 August 2020. **This will be published on our website prior to the AGM*
5. Appointments of officials and retiring Trustees
It is proposed that all officials and Trustees standing for re-election have their appointments extended until the next AGM. Those on a three year appointment to then be eligible to re-election for a further two years to maintain the existing three year cycle
6. Appointment of Hon. Solicitor
7. Appointment of Auditors
8. Any Other Business – to be submitted by 1 February 2021
9. Date of next meeting – Thursday 24 November 2021 (to be confirmed)
Any questions on these must be submitted to the Friends by 10 February 2021 and will be answered on the day and later published.

FASHION SHOW 14TH MAY – POSTPONED ONCE AGAIN

Sorry to disappoint our supporters once again – such a pity to have to re-schedule this event yet again because of Covid-19.



Even if lockdown starts to ease up mid-February, there will almost certainly still be restrictions on group meetings and events well into the Spring/Summer and many will still not be vaccinated. Travelling Trends, who are running the event for us, will let us know when they will be starting up again. Hopefully we will hear in time for the new date to be included in the next Hospitality and those of you who have paid for their tickets will be first to be invited to apply for a place. I am sure that many of us will be more than ready to start looking at clothes again by then!

Thank you for your support for this event – it seems to be a popular addition to our repertoire of fundraising. I do hope that it goes ahead in the end – fourth time lucky maybe?

Rosemary Cameron

FRIENDS OF THE EASTBOURNE HOSPITAL

Registered under the Charities Act 1960 No 220592

Please enrol me as a Member.

I enclose the sum of/I have completed the Banker's Order form.

Annual Subscription	£	:	£10
Renewal of Annual Subscription	£	:	£10
Life Membership.....	£	:	£30
Donation.....	£	:	

£ _____

If you are a tax payer please complete the Gift Aid Declaration form overleaf. The Friends' can reclaim tax on your membership subscription and any donation.

Please do not feel under any obligation, but if you can help in any of the following ways please tick the appropriate box.

- Delivering Hospitality.....
- Volunteer work in the DGH
- Help with fund raising activities.....

Mr/Mrs/Miss/Ms

Address

..... Postcode

Telephone Date

Email

Please return to Hon Membership Secretary
 Friends of the Eastbourne Hospital
 District General Hospital
 Kings Drive
 Eastbourne BN21 2UD

Tel 01323 438236

Data Protection Act 1998

Please note that the Charity uses computer systems to record membership information. Under the Data protection Act 1998, it is necessary for you to be informed of this. The information you provide on your application and renewal form will only be used by the Charity's officials and task holders to conduct Charity business and will not be supplied to outside bodies in any form. If you have any questions or concerns over the data held, please contact the Secretary.

GIFT AID DECLARATION

Boost your donation by 25p of Gift Aid for every £1 you donate
Gift Aid is reclaimed by the charity from the tax you pay for the current tax year.
Your address is needed to identify you as a current UK tax payer.

Please complete the information below and return it to:

The FoEH, Friends Office, Eastbourne DGH, Kings Drive, Eastbourne BN21 2UD

I confirm that I would like all my donations, past, present and future to:
FRIENDS OF EASTBOURNE HOSPITAL (Charity No: 220592)
to be treated as Gift Aid donations.

I am a UK taxpayer and understand that if I pay less Income Tax and/or Capital Gains Tax than the amount of Gift Aid claimed on all my donations in that tax year it is my responsibility to pay any difference.

My Details:

Title..... First name or Initial(s)..... Surname

Full Home address

..... Post Code

Date

Please notify the Charity if you:

* want to cancel this declaration

* change your name or home address

* no longer pay sufficient tax on your income and/or capital gains.

If you pay Income Tax at the higher or additional rate and want to receive the additional tax relief due to you, you must include all your Gift Aid donations on your Self-Assessment tax return or ask HM Revenue and Customs to adjust your tax code.

STANDING ORDER

To

.....Sort Code: A/c No.....
(Name and address of your Bank)

Please pay to Barclays Bank Plc (20-22-67) 9 High Street, Colchester CO11DA for the account of Friends of Eastbourne Hospital (No. 10039667) the sum of

£ : ()
(Amount in figures) (Amount in words)

on 20..... and thereafter on the 01 September each year until otherwise notified.

Signature Date.....

Full Name in Capital Letters (Mr/Mrs/Miss/Ms)

Address.....

..... Post Code

Registered Under the Charities Act 1960 No 220592

WE COLLECT



GREETINGS CARDS

Birthday, get well, sympathy, remade throughout the year. Collected for a short time at the



Not at the current time

cards are collected and sold. Greeting cards can only be collected for a short time at the Friends Shop. Please phone the office.



POSTAGE STAMPS AND POSTCARDS

All kinds of stamps are collected and sold to dealers, private buyers and via Eastbourne Auctions, who support the FoEH. Please do not remove stamps from postcards, which are sold separately.



KNITTING WOOL

Our volunteers make many items from donated wool including: baby clothes, toys and Twiddlemuffs. If you would like to knit for us, please enquire in the Friends Shop.



HABERDASHERY ITEMS

Bits and pieces such as ribbons, buttons, beads and textured fabrics are given to volunteers to sew onto Twiddlemuffs for dementia patients and for card making.



PLASTIC MILK BOTTLE TOPS

Clean milk bottle tops are recycled by FoEH volunteers and are made into everyday items such as traffic cones and children's play equipment. Please ONLY collect milk bottle tops - we cannot accept any other types of bottle tops.



SILK FLOWERS AND FLOWER BASKETS

The Flower Shop volunteers welcome donations of silk flowers, baskets and pretty containers that they can use for new arrangements.



NEW GIFT ITEMS / UNWANTED PRESENTS

New, unopened/unused gifts are sold at our summer and Christmas fairs. We also welcome unopened bottles of wine, spirits, chocolates and jams etc with time before their use by date.



SILVER, JEWELLERY AND BAGS

We collect any items including broken watches and costume jewellery for sale on our silver and jewellery stall. Eastbourne Auctions support us by auctioning the more valuable items and selling bags to collectors.



NEW BATHROOM PRODUCTS

We take unopened / unused items such as make up, creams, soaps, hair products and gift packs that we sell at our summer and Christmas fairs.

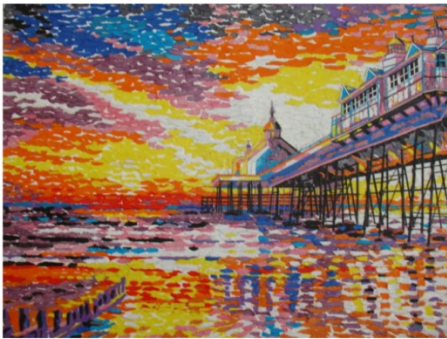


INKJET PRINTER CARTRIDGES

We receive £1 for every HP, Dell, Cannon and Kodak inkjet cartridge that is recycled with Recycle4Charity. Please bring cartridges into the Friends Shop or download a label for free postage at: www.recycle4charity.co.uk

HOW TO DONATE

Please bring your donation to the Friends Shop or Office at the DGH. Alternatively, call the office on 01323 438236 and we can discuss possible collection options.



Some paintings from our Virtual Art Exhibition clockwise from top left:
By the Bandstand by Ian Parratt * Poppies at Glynde by Nicholas Englefield
Hastings Boats by Colin West * The Pathway by Christopher Osborne
Nymans Gardens by Jackie Hurwood * Eastbourne Pier East by Di Jones