

Hospitality



Mr Steve Garnett, Dr Peter Nash and Mr Peter Rimington with The Da Vinci Robot
Keith Ridley, Judy Colbran (Bruford's prize winner) and Ashley Pugh at the Ball
Voluntary Services Coordinator,
Corinne France – retired April 2015

**THE QUARTERLY
MAGAZINE**
of the
**Friends of the
Eastbourne
Hospital**



SUMMER EDITION
April - July 2015
Number 138

Welcome to Caffyns

CAFFYNS
www.caffyns.co.uk

YOUR NO.1 NEW & USED CAR DEALER IN THE SOUTH EAST OF ENGLAND



Audi
Vorsprung durch Technik



Eastbourne Audi

2 Edward Road, Willingdon Drove
Eastbourne, East Sussex BN23 8AS

T 01323 525700

E audi.eastbourne@caffyns.co.uk



Eastbourne Volkswagen

Hammonds Drive, Lottbridge Drove
Eastbourne BN23 6PW

T 01323 647141

E volkswagen.eastbourne@caffyns.co.uk



Eastbourne Volvo

46 Lottbridge Drove, Eastbourne
East Sussex BN23 6PJ

T 01323 418300

E volvo.eastbourne@caffyns.co.uk



Jaguar Authorised Repairer

**RANGE
ROVER**



Land Rover - Jaguar

Brooks Road, Lewes
BN7 2DN

T 01273 646380

E landrover.lewes@caffyns.co.uk

FRIENDS OF THE EASTBOURNE HOSPITAL

Registered under the Charities Act 1960 (220592) and affiliated to ATTEND
(formerly the National Association of Hospital and Community Friends)

Patron

THE BISHOP OF LEWES

EXECUTIVE

President

MRS ANN CAFFYN MBE

Vice-President

DR JOHN SURTEES

Chairman

DR PETER NASH

Vice-Chairman

MR ARNOLD BECK

Secretary

MRS ANN WILSON

Assistant Secretary

MRS DEBBIE WICKS

Hon Treasurer

MR RODNEY BROWNE

Assistant Treasurer

VACANT

Hon Membership Secretary

MRS SUE DUFFELL

Education Officer

MR MARK MALAK

Friends of the Eastbourne Hospital, District General Hospital, Kings Drive,
Eastbourne, East Sussex, BN21 2UD (Tel. No. 01323 438236)
e-mail: esh-tr.friendsdgh@nhs.net www.esht.nhs.uk/foeh

Committee Members

M C Bishop, Mrs S Boyce-Sharpe, Mrs R Cameron, Mr D Lambird
Mrs C Lock, Mrs C Naylor, Mr H Parker, Mrs G Perry
Mrs B Phillips, Dr H Walmsley, Mrs G Woolley

Co-opted:

Mr Richard Sunley, Chief Operating Officer

Hon Solicitor: Mr Glendon Stone

Auditors: Watson Associates, Chartered Accountants

Eastbourne Motoring Centre Ltd

Vauxhall & Suzuki main dealers for new car sales
with massive discounts for all NHS Staff, plus
approved used car and van sales, servicing, repairs
and MOT tests for all makes and models



Motability SPECIALISTS



www.

eastbourneusedcars
.co.uk

View online and visit on site for a huge selection
of quality used vehicles – all makes and models

Cavendish Bridge, Eastbourne, BN21 3SE

www.emcgroup.co.uk

T: 01323 720681



Balloons by
Party Enterprises

Balloons • Party Supplies • Cake Decoration • Myths & Magic

01323 728750 • partyenterprises@outlook.com

46/47 The Enterprise Centre, Station Parade
Eastbourne, East Sussex BN21 1BD

Contents

Page		Page	
1	Committee	16	Cream Tea Advert
2	Adverts	17	Photo Competition, Cards, Sponsors
3	Contents, Dates For Your Diary	18	Victorian Evening
4	Adverts	19	Advert
5	Chairman's Notes	20	Advert
6	American Doubles Tennis	21	Fundraisers
7	Don Anison, Silver & Jewellery	22	Education Lectures
8	Advert	23	News From The Office
9	Grand Draw, Flower Shop	24	Quiz & Advert
10	Adverts	25	Gifts, Legacies & Donations
11	Cream Tea	26	Adverts
12	Rosemary's Coffee Morning	27	Membership Form
13	Volunteering	28	Gift Aid & Bankers Order Forms
14	Adverts	29	Aims & Objectives, Contacts
15	Open Gardens, Stamps		



DATES FOR YOUR DIARY FOR 2015

- 10th May 1.30 pm American Doubles Tennis Tournament Beresford Courts, Summerdown Road
- 17th May 1.30 – 4.30 pm Cream Tea & Summer Fair East Dean & Friston Village Hall
- 20th May Victorian Evening, West Rocks Hotel
- 4th June Education Lecture – see page 22
- 17th June Grand Draw, Old Vicarage, Firle
- 4th July Quiz Night – see page 24
- 23rd July Education Lecture – see page 22

Hospitality Magazine
Printed by:



MANOR GROUP

7 & 8 Edison Road, Eastbourne BN21 8PT
01323 514400

www.manorgroupuk.com

sales@manorgroupuk.com

Editorial Team
Editor and PR
Proofreading

Debbie Wicks
Richard Austin-Cooper

Supporting adults from the age of 18 years who have significant neurological and physical disabilities



For further information
Telephone: 01323 744200 em:
Chaseley, South Cliff, Eastbourne BN20 7JH www.chaseley.org.uk

WILL WRITING SERVICE

**Usual fee per Will
£95 plus VAT**

**Free Wills Brochure
available on request**

(Lasting Powers of Attorney from £235 plus VAT)

Tel: (01323) 460395

Barry & Co Solicitors

Bay Terrace, Pevensey Bay,
East Sussex, BN24 6EE

CHAIRMAN'S NOTES

The arrival of the “Da Vinci” Surgical Robot was reported in the January edition of Hospitality. The only one in Sussex, the robot enables key-hole surgery to be carried out with greater precision, less tissue damage and blood loss and, consequently, a speedier and more comfortable recovery for the patient. Although principally for major prostate cancer surgery, it can be used for other pelvic and colorectal procedures. Brought into use in mid February, at the time of writing, sixteen patients have now had such surgery, each being discharged the following day. I was privileged to be present during the second of these operations and witnessed for myself the huge difference – like chalk and cheese – since the former “open” procedure. It will be of enormous benefit and is a major step in creating a centre for such surgery, here in Eastbourne. The associated publicity shows the importance being attached to it.

The arrival of the Robot coincided with our Spring Ball, the sixth such collaboration with the Rotary Club of Eastbourne – the “Celebrate the Future Ball”. Held on 21 March at the Winter Garden and attended by 240 guests, it raised in excess of £13,500. I am very grateful to our major sponsors - “etc” magazine, Eastbourne Herald and W Bruford Jewellers for their magnificent support, to A Creative Instinct for design and décor and Chalvington Communications and Missing Link (telephones and TV screens supporting the auction). I must make a special mention of new sponsors, Party Enterprising, for their balloon features (table balloons, later donated to Friston Ward, balloon archways on entrance, pillars on the stage and a huge heart and hands to mimic the Friends’ logo as a backdrop on the stage).

I must also thank many other sponsors, volunteers and donors of raffle and auction prizes – see page 19 for a full list. We are very fortunate to have such generous sponsors and supporters who “help us to help them help you”. Thank you to all concerned.

The title of the Ball proved to be particularly apt as we learnt that the contracts between East Sussex Healthcare Trust and Balfour Beatty had finally been signed for the redevelopment of Pevensy Ward. Indeed, the in-patient and day treatment services had already been moved to their temporary accommodation. This was the news that we have been waiting so long for. It has been a long journey with hopes raised and then dashed again. It has been particularly frustrating for all concerned, but when it re-opens later in the year, we will have a much enhanced facility enabling the staff to continue their excellent and greatly appreciated work. Thank you all for your patience.



FRIENDS OF EASTBOURNE HOSPITAL

(Registered Charity No 220592)



INVITE YOU TO COMPETE IN AN AMERICAN DOUBLES TENNIS TOURNAMENT



at the EASTBOURNE COLLEGE ASTROTURF COURTS,
BERESFORD, SUMMERDOWN ROAD, EASTBOURNE, BN20 8DR

SUNDAY 10th MAY 2015 from 2pm - 6pm

**** Competitors are requested to arrive at 1.30 pm**

ENTRY IS **£15.00** PER ADULT TO INCLUDE A SPLENDID TEA

All proceeds go to The FoEH 2015 special project:

**Raising £1 million for the Da Vinci Surgical Robot
already revolutionising prostate cancer surgery at the EDGH**

Please return the slip below to Bo Phillips, 50 Summerdown Road,
Eastbourne BN20 8DQ Tel: 01323 722985 by Friday 1st May 2015

✂ -----
FRIENDS OF EASTBOURNE HOSPITAL AMERICAN DOUBLES
TENNIS TOURNAMENT SUNDAY 10th MAY 2015

NAME

ADDRESS
.....
.....

TELEPHONE ENTRY FEE ENCLOSED

The good news did not end there! Although not a Friends project, we welcomed the news that the plans to create a Radiotherapy Centre at the DGH were proceeding well, with the ambitious target date of treating the first patients by the end of 2015. This will save many patients from Eastbourne travelling back and forth to Brighton and anyone who has had to make that daily journey will appreciate the enormous difference it will make for future patients.

The combination of all three is really something to celebrate!

Peter Nash

A TRIBUTE TO DON ANNISON

I am sorry to have to let you know that Don Annison, who has been a member and active supporter of the Friends of Eastbourne Hospital for many, many years, sadly passed away last month after a short illness.

Don has supported a wide variety of Friends' activities over the years, but his main focus was the Open Gardens. He was a very well informed plantsman and shared his knowledge with visitors and other volunteers. He was always a very reliable washer-upper at the gardens and a very popular character within the team. In later years he was unable to volunteer at the gardens as he was looking after his wife, but carried on contributing his popular Sweet Pea plants and eggs to sell.

Don came into the office regularly with stamps for June, which he collected from his GP surgery. He was involved with the remade cards, Hospitality distribution and many other activities over the years. Don was one of those people who quietly made a very positive contribution to the charity and will be much missed by all those who knew him.

Debbie Wicks

SILVER, JEWELLERY AND BAGS

The Silver, Jewellery and Bag stall will be one of the attractions at the Cream Tea and Summer Fair this year at East Dean Village Hall. As always we will have a fine selection of items for you to buy for yourself or as a gift. Please do come and visit our stall and see what gems we have. We would welcome any donations, so please call us on 01323 732109 and we will be pleased to collect your items. Or, if you are in the hospital, you can leave donations at the Friends Office.

With thanks again to the generosity of everyone who supports our stall including Jeannette and Paul at Eastbourne Auction Rooms and all those who donate items for us to sell or auction.

Jeanette Evans and June Biscoe

*"I have never worked
with a company
that is so orientated
towards quality and
professional training"*

iIP Gold Award



PRIME
CARE

Join our team as a Care Support Worker

and make a real difference
to people's lives, caring for
them at home

Apply online or phone
for an information pack

**31 Hyde Gardens, Eastbourne,
East Sussex BN21 4PX**

Phone: 01323 645592

www.primecare.uk.com



THE GRAND DRAW – 17 June 2015

To help us raise as much money as possible towards our Special Project, the Da Vinci Surgical Robot, we hope that you will be able to sell the raffle tickets enclosed with this magazine. Please let us know in the office (438236) if you would like more tickets to sell to family and friends. If you are intending to purchase the tickets yourself, don't forget you can gift aid your donation by completing the form at the back of this magazine and enclosing it with your ticket stubs and payment; gift aid increases the amount the charity receives to £1.25 for every £1 given.

This year's Grand Draw is taking place at the Old Vicarage, Firle, which is the venue of one of our popular Open Gardens. You can take your ticket stubs and payment to this or any of the open gardens leading up to the Draw. Please give them to Sue Duffell at the FoEH stall. Sue's also happy to take your milk bottle tops, stamps, wool and any new but unwanted gifts that you would like to donate.

We would like to thank everyone who has already kindly volunteered to sell raffle tickets in the main foyer at the Eastbourne DGH. We are still recruiting volunteers for the last week in May and the first two weeks of June, so please do get in touch if you can help.

Debbie Wicks

FLOWER SHOP

The Flower Shop volunteers are very keen to promote the shop to the local community and let people know about the service they provide. To help "spread the word" the volunteers go out and about and have recently visited the Gildredge Bowls Club and the Arndale Centre raising £155 and £208 respectively, which are great results.

Their next community event is the Spring Fair at the Devonshire Park Theatre on 9.30 am – noon on Saturday 9 May followed by Music in the Park on Sunday 7 June, which is being held on the recreation ground at Huggetts Lane. There will be flower arranging demonstrations and lots of accessories and fresh and silk arrangements to buy. Please do go along and support them.



Don't forget, £5 gift tokens are available to purchase from the Flower Shop and make a great present, enabling the recipient to choose their own arrangement or gift.

Flower Shop Team

SUSSEX SECRETARIES

DO YOU NEED HELP?

**FOR REASONABLE HOURLY RATES WE CAN PROVIDE SUPPORT
FOR YOUR BUSINESS OR IN YOUR HOME**



Call us to discuss ways in which we can help you

Corinne Gibbons and Marcia Alexander

Tel: 01424 892463

Mobiles: 07940 886123 and 07816 486410

www.sussexsecretaries.co.uk



CHRISTINE M. BARTON

m.e.a.ch. m.a.c.pod

HOME VISITING

FOOT HEALTH PRACTITIONER

TEL: 01323 502867



CREAM TEA – SUNDAY 17 MAY 2015

The venue for last year's Cream Tea and Summer Fair was such a success that we booked a date for this year as soon as it was over. We would therefore like to welcome you back to the East Dean and Friston Village Hall on Sunday 17 May 2015 from 1.30 pm until 4.30 pm, for what promises to be a very enjoyable afternoon.

As with previous years, we will be serving a sumptuous tea with prices starting from £5 for a traditional cream tea or a slice of cake. You can of course have both for a few pence more! Tickets for the 2 pm or 3 pm sittings can be bought in advance by contacting the Friends Office on 01323 438236 or they will be available on the day. Please note that we will not have card facilities at the event but you can purchase your tickets over the phone, in advance, using your card.

We are very fortunate to have some great entertainment lined up for guests to enjoy whilst savouring their tea, including the ever-popular Downland Singers and young Harry Plant, the hospital's Musician in Residence, who plays the piano beautifully.

There will be free entry to the summer fair which is being held in the small hall, spilling out into the garden area and the front of the venue, giving us more space than last year. We are having many of our favourite stalls, including: Plants, Cakes and Preserves, Bathroom, Silver and Jewellery, Stamps, Books, Cards and Flower Shop. There will also be a Tombola and Grand Draw tickets for sale. Visitors who would like to enjoy a taste of summer can visit the Plants and Pimms Stalls in the garden.

We are keen to receive any donations that you have for the stalls. Please call us at the office if you have plants that you would like to donate and we will arrange collection. Cakes, pies, jams etc can be brought to the cake stall on the day or dropped into The Friends' Shop and if you can let Sue Hitchen know that they are coming, that would be even better. Jeanette Evans would like bits and bobs of old jewellery, silver and bags, Bo Phillips would like items for the Bathroom Stall and we would appreciate books – please contact the office if you have a donation. We would also welcome new gift items or bottles for the tombola.

Do come along and join us for the afternoon and have some fun whilst helping us raise money towards our Special Project, the Da Vinci Surgical Robot.

Debbie Wicks



FRIENDS OF EASTBOURNE HOSPITAL



Rosemary Cameron would like to invite you to

A COFFEE MORNING



Friday 8th May 2015

10 am – 12 noon

47 SUMMERDOWN ROAD
EASTBOURNE
EAST SUSSEX
BN20 8DR

Donations of £1.00 FOR COFFEE AND BISCUIT

Raffle & Stalls including: Homemade Cakes and
Preserves, Books, Jewellery & Plants

**GIFTS AND DONATIONS WOULD BE VERY GRATEFULLY
RECEIVED FOR THE BATHROOM STALL AND TOMBOLA
AT THE FRIENDS ANNUAL CREAM TEA AND SUMMER FAIR
ON SUNDAY 17th MAY FROM 1.30 pm
AT EAST DEAN AND FRISTON VILLAGE HALL**

All proceeds will go towards the
FoEH Major Project for 2015:
Raising Funds for the Da Vinci Surgical Robot
at the Eastbourne DGH

Please come along and do bring a friend

VOLUNTEERING

You may have heard that Corinne France, the Hospital's much-loved Voluntary Services Co-ordinator, retired this month. The volunteers, Trustees and FoEH staff will be very sad to see her go and wish her a long, happy and healthy retirement and thank her for her hard work and support of the charity over the years. We know that the FoEH volunteers will miss her as much as we will; the DGH won't be the same without her.

Volunteers are the life-blood of our organisation, raising money to support the hospital. Without them there would be no shops, no flower shop, no open gardens and no events. Indeed, there would be no charity, as the FoEH is run by Trustees who themselves are all volunteers.

Have you thought about volunteering? It is a wonderful way to give back and make a difference to the local community. Not only does it benefit the hospital but it also benefits the volunteer, by giving a sense of purpose, self-worth and the feeling that what you do really does make a difference. It serves as proof of a good work ethic for those wishing to get a job and is a pre-requisite for young people wanting a place on a course or for university. Indeed, a student volunteering in the hospital shop was told that her year's voluntary experience was one of the main reasons she gained a coveted place to train as a midwife.

We are currently looking for volunteers in our shops and on our trolley rounds, mornings and afternoons (the sandwich round goes out seven mornings a week). We are also recruiting people to help at our Cream Tea on 17 May. We would particularly like to enlist one or two people to take over the Book Stall, which is very popular at the Cream Tea and at the Christmas Coffee Morning. It only happens twice a year, so is not too onerous a task – could it be for you? We are also looking for a skilled person to take over the compilation of this magazine, bringing a modern twist to the way it is presented. This role would obviously require a high-level of computer literacy and, ideally, publishing experience. If you would like to “make a difference” and are interested in volunteering for the Friends, please contact us on 01323 438236 for a chat about what you would like to do.

Finally, a quote from Good Housekeeping Magazine: “Taking time to volunteer – even for a few hours a week – will benefit you as well as others. Volunteering has been shown to boost mental and physical health, combat depression and help people live longer.” What more could we ask?

Debbie Wicks

“TWEED”

The Emilie Galloway Home of Rest

Manager: Tess Howell



Situated near the Grand Hotel, local shops and the sea front, Tweed is a superior quality care home for 21 residents run by a charitable trust established in 1930. The trust seeks to keep its fees to a minimum and tailored to the needs of the resident, whilst providing a high standard of care and accommodation.

01323 733223

Email: info@tweedcarehome.co.uk www.tweedcarehome.co.uk

Tweed, The Emilie Galloway Home of Rest
8/10 Silverdale Road, Eastbourne BN20 7AL

COUNSELLOR

Isabel Jordan

MA/MBACP/UKRC/VACTS

Anxiety – Depression – Bereavement

Addiction – Relationships – Trauma

Stress – Panic Attacks – Low Self Esteem

General – Divorce – Life Changes

Telephone for an Appointment

01323 503374

OPEN GARDENS 2015

After the sunniest winter on record what can we expect this summer? The open gardens team have their fingers crossed for some fine, sunny weather as we have some really beautiful gardens in our programme this year.

We commence with a visit to Folkington Manor in its parkland setting, on May 26. Please note this is a Tuesday. For the remainder of the gardens we revert to the usual Wednesday opening. Then in June we are returning to Glydes Farm in Ashburnham, a real plantsman's garden and we have the added bonus this year of another smaller garden, Little Midge, which is a short walk down the lane. Some local gardens in Eastbourne follow, with 3 gardens in Baldwin Avenue.

The Grand Draw on 17 June will take place at the Old Vicarage at Firle. Then at the end of the month, we are local once more, at Flint House in Church Street, Willingdon. This garden is new to the Friends but Gilly Keef has opened her garden on many occasions for other local organisations.

In July we have two ever-popular gardens: Ocklynge Manor, with its wonderful display of roses and Bates Green Farmhouse at Arlington. At Bates Green we shall be open from 10 am to 4 pm and apart from the usual refreshments, we shall also be serving a ploughman's lunch. If this proves to be popular we may open more gardens for lunch next year. Our last garden of the season is Greatease at Litlington, which we have not visited for some time and is now under new ownership.

Finally, we thank the owners of the gardens for their generosity in allowing us to visit their private havens. It makes for a wonderful day out and a chance for many of us to catch up with friends. We look forward to seeing you.

Gill Woolley

STAMPS AND POSTCARDS

This year's Cream Tea and Summer Fair is on Sunday 17 May from 1.30 pm at East Dean and Friston Village Hall and I am busy getting stamps and postcards ready for the stall. My good friends, Gill and Brian Watt will be looking after your needs on the day, as I am not able to be there due to family celebrations.

Thank you all so much for your donations – there wouldn't be a stamp stall without your generosity.

June Tickner



Friends of
Eastbourne
Hospital

ANNUAL CREAM TEA & SUMMER FAIR

East Dean & Friston Village Hall
Gilbert Drive, East Dean
(No 12 Bus run every 15 mins from Eastbourne)

Sunday 17th May 2015
1.30 pm – 4.30 pm

Cream Tea £5 or £6.50 to include cake

Call the Friends Office on 01323 438236
for tickets or buy them on the day

There will be musical entertainment in the Main Hall,
whilst guests enjoy their tea and scones

Free entry to a selection of stalls including:

Plant Stall * Bathroom Stall * Stamps

Cakes & Preserves * Remade Cards * Tombola *

Pimms * Books * Flower Shop * Silver & Jewellery

Grand Draw Tickets

Raising £1 million for the "Da Vinci" Surgical Robot
Providing Prostate Cancer keyhole surgery at the Eastbourne DGH

OPEN GARDENS – EXTRA NEWS!

New for this year we have a photographic competition for the visitors to our gardens. We are looking for a photograph that really captures the 'Glory of the Open Garden', and are hoping for some amazing pictures. Other than not identifying the actual property or people without their permission, the only limitation is your imagination. We will be publishing the winning photo in a future copy of Hospitality and hope to use that and other entries for a montage on our notice board and for the publicity material for next year's gardens. Information about the competition will be available at the entrance gate to each garden.

Sue Duffell

REMADE CARDS

I would like to thank the remade card team who have sorted thousands of donated Christmas cards over the last few months; I am very pleased to say that we have now cleared them all – well done ladies!

The team are turning their attention to making cards for sale in the shop and for our many outside events, including the Open Gardens and the Cream Tea. Please keep your card donations coming, so that they have a good selection of cards to remake. Donations can be left with the shop or give them to Sue at the Open Gardens.

Debbie Wicks

The FoEH would like to extend their grateful thanks to the companies and individuals who supported the 'Celebrate the Future Ball' in March:

A Creative Design
Beauty Basics
Brufords
Cavendish Hotel
Chalvington Communications
Chatfield Jewellers
Cornfield Law
Drusillas Park
Eastbourne Rotary Club
EBUK
Energie Fitness for Women
Enterprise Centre
Etc
Fusciardi Ice Cream Parlour
Gold Arts (Brighton)
Grand Hotel

H T White
Hydro Hotel
Mahayana Salon
Mercedes Eastbourne
Missing Link
Nigel Greaves Gallery
Parker Building Supplies
Party Enterprises
Pinks Nail Lash & Beauty Design
Pomodoro e Mozzarella
Posh & Decks
Sheer Bliss
Style by Zoe
The Herald
Urban Ground



**Friends of
Eastbourne
Hospital**

**Invite you to
A Victorian Evening**

at

West Rocks Hotel

Grand Parade Eastbourne BN21 4DL

on

Wednesday 20 May 2015

7 for 7.30 pm

2 course meal £19.50

Proceeds to the Robot Fund

Paul Klein

from the

Eastbourne Antique Centre

**will value and talk about any
items you bring with you**

Tickets available from Friends office

Tel: 01323 438236

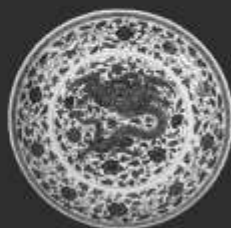
email: esh-tr.friendsdgh@nhs.net

Eastbourne Auctions

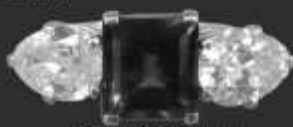
Your Local Saleroom with an International Reputation

We sell a wide range of Fine Art,
Antiques *and* 'collectables' including:

- ◆ Any Oriental Items (in any condition)
- ◆ Any Jewellery (including costume & amber)
- ◆ Militaria (including medals & paperwork)
- ◆ Any Silver (including damaged items)
- ◆ African & Indian Art
- ◆ Autographs
- ◆ Any China Animals
- ◆ Books & Old Photos
- ◆ Coins & Banknotes
- ◆ Corkscrews
- ◆ Fountain Pens
- ◆ Lighters
- ◆ Musical Instruments
- ◆ Paintings
- ◆ Paperweights
- ◆ Postcards & Stamps
- ◆ Scent Bottles
- ◆ Sewing Items
- ◆ Taxidermy
- ◆ Toys & Dolls
- ◆ Vintage Clothes
- ◆ Vintage Luggage
- ◆ Walking Sticks
- ◆ Watches & Clocks
- ◆ Wooden Boxes
- ◆ Any Knick-knacks



SOLD FOR £7,700



SOLD FOR £11,000



SOLD FOR £2,000



SOLD FOR £4,600



SOLD FOR £4,800

Auction House
Finnere Road
Eastbourne
East Sussex
BN22 8QL

OPEN
Monday – Friday
10 am – 4 pm
for
FREE VALUATIONS

Saturday Sales:
4th April, 2nd May
Next Antiques Sale:
7th & 8th May

*Contemporary,
Decorative &
Collectables Sales*
Saturdays
11th April, 9th May

As seen on BBC TV's Bargain Hunt and Flog It!

If In Doubt, Check It Out!



Telephone 01323 431444

www.eastbourneauction.com





Sunrise of Eastbourne

The Life you Want, The Care you Need



When it comes to senior care, Sunrise continues to set the standard. Our expertly trained staff and the high quality personalised care we offer are changing the way people think about senior living.

Our tailored programmes of care, a huge range of daily activities, weekly outings and passionate, expertly-trained staff all come together to create a senior living experience unlike any other.

Whether it's assisted living, nursing or our ground-breaking Reminiscence neighbourhood bringing comfort to those living with memory loss, everything we do is born from a commitment to providing only the very best care to seniors.

Call us on **01323 887927** to find out more

Sunrise of Eastbourne, 6 Upper Kings Drive,
Eastbourne, East Sussex BN20 9AN

www.sunrise-care.co.uk

FUNDRAISERS

Mary and John Carden are a couple who collect milk bottle tops, which they sell for recycling. The tops are melted down and turned into pellets and sold back into UK industry. They can be made into anything from fence posts to traffic cones. Mary and John recently gave the FoEH a donation of £150 from the sale of 2.5 tonnes of milk bottle tops. Altogether the couple have collected and sold 10 tonnes of bottle tops, raising hundreds of pounds to benefit patients suffering from prostate cancer. What an achievement! If you would like to recycle your (clean) milk bottle tops, please drop them into the shop or give them to Sue at the Open Gardens - we will make sure that Mary and John get them.

The staff at Hailsham Community Centre wrote Christmas messages on a festival board in lieu of cards and donated £30.20 to the Pevensey Appeal. We thought that this was such a good idea that we will be looking into rolling it out to local offices this Christmas.

The staff on the Eastbourne Midwifery Unit are busy knitters and make beautiful cardigans for new babies born at the Eastbourne DGH. Grateful parents who would like a cardigan make a donation to the FoEH. The charity has recently received donations totalling £402.21 for the maternity unit, raised from the sale of these cardigans.

We would like to thank Mrs Jean Breach, who collects her loose change in a jar, for her donation of £39.62. What a good idea; it just goes to show how easily the pennies mount up.

The Beachy Head Masonic Lodge donated £100 towards this year's special project, the Da Vinci Surgical Robot. The Masons are known for their charitable giving and we would like to thank them for their generosity.

In 2014 the FoEH was fortunate to be the chosen by Seaford Evening Flower Arranging Club to be their charity for the year. We would like to thank them for the generous donation of £300.

On the 12 April, Matt Graham-Smith ran his third marathon dressed as a Ghost Buster, to raise money for the Friends. If you would like to sponsor him, please visit his JustGiving page.

The FoEH are now using BT MyDonate in preference to JustGiving as an online fundraising tool, as more money comes to the charity through this site. Remember, you don't need to be running a marathon or jumping out of a plane to make a donation page on BT MyDonate to benefit the Friends, you can simply donate in this way. Please visit www.btplc.com/mydonate to make your page.

You are invited to the next in a series of talks on Advances in Medicine and Surgery



Thursday 4 JUNE 2015 at 7.00 pm

“New Arrivals in Maternity”

By Obstetric & Gynaecology Consultant
Ms Nicky Roberts



Thursday 23 JULY 2015 at 7.00 pm

“So What is a Robot Anyway?”

By Urology Consultant
Mr Peter Rimington



Lecture Theatre, Education Centre, Eastbourne DGH
Disabled Access

FREE PARKING tickets available on the night

**Please contact the Friends Office
to book your seat**

01323 438236

email: esh-tr.friendsdgh@nhs.net

The talk will last approximately an hour and we invite you to join us for refreshments afterwards

NEWS FROM THE OFFICE

What a busy first quarter we have had with lots of activity around our 2015 Major Project – the Da Vinci Surgical Robot. I hope you have all seen the wonderful publicity in the local press and TV coverage we have had over the last few weeks. Despite that there are still people in Eastbourne who do not know about this amazing piece of kit, so your help in spreading the word and encouraging people to support us in raising the money to pay for it would be very much appreciated.

A big thank you goes to everybody who attended the Ball on 21 March and whilst having a fantastic evening succeeded in raising something close to £13,500 which will go to the Robot Fund.

Jane Bradley organised a Quiz on 28 March which was well attended and enjoyed by fifteen teams. Jane and her team raised nearly £600 for the Friends. Organising a quiz to raise money for the FoEH is something Jane does regularly and I would like to say a big thank you to her and all the people who help her with the food and the questions. Their hard work is very much appreciated.

If you would like to run a fundraising event on behalf of the Friends we will be very happy to help in any way we can, so please give us a call.

Lots of people have asked about another 'Dine Around the World' and having looked for a venue that will offer cuisine that has not been presented before I cannot find anywhere with enough space to accommodate as many as will want to come.

However, as an alternative, we will be hosting A Victorian Evening on Wednesday 20 May at West Rocks Hotel on Grand Parade when you are invited to come and bring something Victorian with you or come dressed in Victorian style if you are brave enough. Our after dinner speaker will be Paul Klein from the Eastbourne Antique Centre who will talk about items that you have brought with you and possibly value them for you. Full details of the evening are on page 18 and I look forward to seeing a good number of you there.

In preparation for the launch of the Members Discount Scheme please make sure you have an up to date membership card as you will need it to obtain discounts from retailers and more news of this will follow.

Do please feel free to come and say hello as we do like to hear what our members have been up to.

Ann Wilson

Qu?z Night

In support of the Friends of the Eastbourne Hospital

Saturday 4 July 2015

7.00 pm for **7.30 pm** start

at **Christchurch Hall**

Seaside, Eastbourne

Teams of up to **6 people**

£10 per person

to include ploughman's platter & desert

PLEASE BRING OWN DRINKS

Places must be booked in advance – please contact Jane on
01323 728662 or email: janiebradley@btinternet.com

IOLANTHE

or THE PEER AND THE PERI

by SIR WILLIAM S GILBERT and SIR ARTHUR SULLIVAN

DEVONSHIRE PARK THEATRE, EASTBOURNE

TUESDAY 5TH-SATURDAY 9TH MAY 2015

Evenings @ 7.45pm

Wednesday & Saturday Matinees @ 2.30pm

(NO PERFORMANCE WEDNESDAY EVENING)

TICKET PRICES

Tuesday: All tickets **£12** (no concessions)

Wednesday-Saturday: All tickets **£14**; Concessions **£1** off

Under 16s: **£5** ALL performances

Groups: Buy 10 Tickets, Get 11th **FREE**

BOX OFFICE: 01323 412000
WWW.EASTBOURNETHEATRES.CO.UK



Affiliated to The National Operatic & Dramatic Association
Registered with The Charity Commissioners No. 803334

GIFTS, LEGACIES AND DONATIONS

Donations in lieu of Flowers

During the past three months we have received with gratitude donations totalling £5,610 in memory of:

Don Anison, Margaret Blake, Marion Couchman, Michael Couzens, Tony Evans, Stephen Foster, Anthony Holland, Maurice Hopkins, Joyce Luscombe, Monica Piper, Doreen Ridgway, Geoffrey Rockingham, Nigel Rowbotham, Reginald Smith, Sheila Smith, David Thomas, Betty Turner, Ivor Weyland, Brenda Wright

Legacies

During the past three months we have received, with gratitude, legacies from the estates of:

Kathleen J Achurch, Constance Bennett, Mrs I D Silcock

Recent gifts to the Eastbourne District General Hospital

Fibroscan	Gastroenterology	£77,750
Smart Phone App	Pharmacy	£6,000
Ultrasound Machine	Women's Health	£56,000
Total		£139,750

WOULD YOU LIKE TO ADVERTISE IN THIS MAGAZINE?

**Discover a cost effective way to reach
your target audience - call 01323 438236**

A half page advert costs
£40 per edition or £160 per annum

A full page advert costs
£75 per edition or £300 per annum

Hospitality is distributed to our 3,000 members, local doctors' surgeries, solicitors and other businesses. It is also available at all our fundraising events and copies are distributed via our DGH notice board brochure holders and in many hospital departments, thereby reaching a very wide readership.



Visit the Friends Shop

in the DGH Foyer and discover the great variety of goods on sale

Confectionery, Drinks, Toiletries, Toys, Stationery, Nightwear, Slippers, Norfolk Lavender products, Aprons, Bags, Tea towels plus a great selection of Books, Magazines and Newspapers

OPEN MONDAY- FRIDAY 9.00 am – 6.30 pm
SATURDAY 10.30 am - 4.00 pm AND SUNDAY 1.30 - 4.00 pm

Tel: 01323 - 647188

The Friends also have the Corner Shop near The Restaurant and provide a Trolley Service to the wards



Flowers for All Occasions

call in and see us at the

Friends Flower Shop

in the Hospital Foyer

Open Monday -Friday 9.00 am – 4.00 pm

Saturday 1.30 pm – 4.00 pm

Telephone Orders: 01323 417400 ext 4033

All profits go to the Hospital

* You can have 30 mins FREE PARKING in the car park whilst you shop

FRIENDS OF THE EASTBOURNE HOSPITAL

Registered under the Charities Act 1960 No 220592

Please enrol me as a Member.

I enclose the sum of/I have completed the Banker's Order form.

Annual Subscription	£	:	£5
Renewal of Annual Subscription	£	:	£5
Life Membership.....	£	:	£25
Donation.....	£	:	

£ _____

If you are a tax payer please complete the Gift Aid Declaration form. The Friends can reclaim tax on your membership subscription and any donation.

Please do not feel under any obligation, but if you can help in any of the following ways please tick the appropriate box.

- Delivering Hospitality.....
- Volunteer work in the DGH
- Help with fund raising activities.....

Mr/Mrs/Miss/Ms

Address

..... Postcode

Telephone Date

Email

Please return to Hon Membership Secretary
Friends of the Eastbourne Hospital
District General Hospital
Kings Drive
Eastbourne BN21 2UD

Tel 01323 438236

Data Protection Act 1998

Please note that the Charity uses computer systems to record membership information. Under the Data protection Act 1998, it is necessary for you to be informed of this. The information you provide on your application and renewal form will only be used by the Charity's officials and task holders to conduct Charity business and will not be supplied to outside bodies in any form. If you have any questions or concerns over the data held, please contact the Secretary.

GIFT AID DECLARATION – for a single donation

Please treat the enclosed gift/subscription of £..... as a Gift Aid Donation.

I confirm I have paid or will pay an amount of Income Tax and/or Capital Gains Tax for the current tax year (6 April to 5 April) that is at least equal to the amount of tax that all the charities or Community Amateur Sports Clubs (CASC) that I donate to will reclaim on my gifts for the current tax year. I understand that other taxes such as VAT and Council Tax do not qualify. I understand the charity will reclaim 25p of tax on every £1 that I have given.

Donor's details:

Title First name or Initial(s) Surname

Home address.....

.....

..... Post Code

Signature..... Date

Please notify the Charity or CASC if you:

1. Want to cancel this declaration.
2. Change your name or home address.
3. No longer pay sufficient tax on your income and/or capital gains.

If you pay Income Tax at the higher or additional rate and want to receive the additional tax relief due to you, you must include all your Gift Aid donations on your Self Assessment tax return or ask HM Revenue and Customs to adjust your tax code.

BANKER'S ORDER

To

..... Sort Code: A/c No.....
(Name and address of your Bank)

Please pay to Barclays Bank Plc (20-22-67) 9 High Street, Colchester CO11DA for the account of the Friends of the Eastbourne Hospital (No. 10039667) the sum of

£ : ()
(Amount in figures) (Amount in words)

on 20..... and thereafter on the 01 September each year until otherwise notified.

Signature..... Date.....

Full Name in Capital Letters (Mr/Mrs/Miss/Ms)

Address.....

.....

..... Post Code

The FRIENDS OF THE EASTBOURNE HOSPITAL was established in 1948 shortly before the introduction of the National Health Service when it became apparent that the resources would not be enough to meet the cost of all the necessities and amenities for Staff and Patients.

Originally called 'The Patients Association' it was renamed 'The Friends of the Eastbourne Hospitals' (FoEH) in 1953 and became affiliated to the National Association of Leagues of Hospital Friends, now renamed ATTEND.

The aims and objectives of the FoEH can be summarised:

1. To provide funds for extra services, equipment and amenities for patients and staff and to make donations where the expenditure has been recommended by the relevant NHS Trust and has been approved by the Committee.
2. To encourage voluntary work in the hospital.
3. To provide a link between the hospital and the community.

Membership is open to anyone paying a Membership Fee. This is £25 for Life Membership and £5 for Annual Membership, which is due on 1st September each year.

The subscription also covers a free copy of this quarterly magazine, HOSPITALITY, which is delivered by volunteers, although all members with addresses outside our hand delivery areas are encouraged to supply postage stamps for their copies.

Enquiries should be addressed to the appropriate Official of the FoEH, whose names are given on page 1. When a reply is required a self-addressed stamped addressed envelope is appreciated.

HELP US TO HELP YOU CONTACTS

HOSPITALITY EDITORIAL TEAM, The Friends Office, Eastbourne District General Hospital, Kings Drive, Eastbourne, BN21 2UD. Tel No. 01323 438236
or email: esh-tr.friendsdgh@nhs.net

All contributions and photographs are welcome and can be sent to the Editorial Team at the above address.

HOSPITALITY DISTRIBUTION, records and envelopes for the attention of Mrs Sue Duffell, The Friends Office: 01323 438236.

REGIONAL COMMITTEES We have an active sub-committee in Seaford. We would like to re-establish Regional Committees in the Pevensey and Westham and the Hailsham regions. Would you be interested? If so please get in touch with the Secretary at the Friends' Office.

HOSPITAL RADIO PROGRAMMES For requests for music and dedications on Hospital Radio Programmes please call the Radio DGH Studio on 01323 435748 or visit their website at: www.radiodgh.com

REMADE CARDS You can leave your donated Birthday, Get Well, Sympathy and Best Wishes cards in the tin box at the back of the Main Shop's Stockroom at any time. PLEASE ONLY LEAVE CHRISTMAS CARDS UNTIL THE END OF JANUARY. Enquiries to Debbie Wicks, Friends' Office: 01323 438236.

USED POSTAGE STAMPS AND POSTCARDS Mrs June Tickner, 7 Somerville Close, Eastbourne, BN23 6BP Tel No. 01323 729541. Both UK and foreign stamps are welcome. Please trim off surplus paper leaving about ¼ in (½ cm) all round the stamps to avoid any damage. Please DO NOT remove stamps from postcards.

VOLUNTEERING Voluntary Services Co-ordinator, Voluntary Services Office, Eastbourne DGH, Kings Drive, Eastbourne BN21 2UD Tel No. 01323 417400 ext 4880 or Debbie Wicks, Friends' Office: 01323 438236.



Clockwise from top: Guests enjoying the "Celebrate the Future Ball"
The Da Vinci Surgical Robot in use
Theatres Open Evening to Introduce the Da Vinci Surgical Robot
& guests enjoying the event