

HOSPITALITY

QUARTERLY MAGAZINE

Friends of the Eastbourne Hospital

Celebrating

70 YEARS

1948 - 2018

SUMMER EDITION

April - July 2018

Number 150



**Friends of
Eastbourne
Hospital**

Help us help them help you

WELCOME TO

CAFFYNS



1 5 0 Y E A R S
S I N C E 1 8 6 5

YOUR NO.1 NEW &
USED CAR DEALER
IN THE SOUTH EAST
OF ENGLAND



SKODA



Volkswagen



www.caffyns.co.uk

21068



ANNUAL CREAM TEA & SUMMER FAIR

East Dean & Friston Village Hall

Gilbert Drive, East Dean

No 12 Bus runs every 15 minutes from Eastbourne

Sunday 17 June 2018

1.30 pm – 4.30 pm

**MUSICAL ENTERTAINMENT
& CREAM TEA from £5**

Call the Friends Office on 01323 438236
for tickets or buy them on the day

FREE ENTRY TO A SELECTION OF STALLS

- Plant Stall * Bathroom Stall * Stamps
- Cakes & Preserves * Remade Cards
- Pimms * Books * Flower Shop
- Silver & Jewellery * Grand Draw Tickets

FREE PARKING ON FIELD
Disabled parking available



Eastbourne Motoring Centre Ltd

"We're not number one, you are!"

Vauxhall and Suzuki new
& used car Sales & Service



VAUXHALL



Motability



PLUS over 200 used cars and vans
all makes and models available

www.
 **eastbourneusedcars**
View on line and visit on site .co.uk

Hospitality Magazine readers Service Offer!

**Interim Service
with MOT test**

**NOW ONLY
£149.00**

**Full Service
with MOT test**

**NOW ONLY
£199.00**

**Major Service
with MOT test**

**NOW ONLY
£249.00**

FREE local collection and delivery • FREE wash and vac with every service

**FREE
MOT
FOR LIFE**

CLAIM YOUR FREE MOT TEST FOR LIFE
WHEN YOU HAVE YOUR VEHICLE
REGULARLY SERVICED WITH US

Eastbourne Motoring Centre Ltd

Cavendish Bridge, Eastbourne BN21 3SE

01323 720681

www.emcgroup.co.uk

Contents

Page

	Caffyns Advert
1	Cream Tea & Summer Fair Advert
2	Eastbourne Motoring Centre Advert
3	Contents, Dates For Your Diary
4	Committee
5	Chairman's Report
6	Barry & Co, Legacy advert
7	Grand Draw, Yeomen of the Guard
8	Ocklynge Manor, Tweed
9	Open Gardens
10	Right at Home, Surridges
11	Battle of the Bottles, Tennis Tournament
12	Sunrise Advert
13	Stamps, Belgian Café, Flower Shop
14	Barn Dance

Page

15	70 Years on
16	News from the Office
17	News from the Office
18	Oscar's Hair & Beauty Advert
19	Fundraising and Donations
20	Meads Care, Sussex Secretaries
21	Rosemary's Coffee Morning
22	Gifts, Legacies and Donations
23	Trust News
24	Contact Information, Shop Advert
25	Membership Form
26	Gift Aid & Bankers Order Forms
27	Education Lectures, Christine Barton
28	Chanctonbury Healthcare Advert
29	We Collect

DATES FOR YOUR DIARY FOR 2018

- 13 May Tennis Tournament
- 24 May Education Lecture – see advert page 27
- 16 May First Open Garden – see brochure
- 17 May Rosemary's Coffee Morning
10 am-12 pm 35 Compton Drive Eastbourne
- 17 June Cream Tea & Summer Fair, Grand Draw
1.30 pm East Dean and Friston Village Hall
- 30 June Barn Dance and Hog Roast
6.30 pm Carter's Corner Farm, Carter's Corner
- 5 July Education Lecture – see advert page 27



Hospitality is printed by:

TANSLEYS LIMITED
PRINTERS

High quality lithographic and digital printers
T: 01323 891019
E: info@tansleysprinters.co.uk
www.tansleysprinters.co.uk

19 Broad Street
Seaford
East Sussex
BN25 1LS



Editorial Team
Editor and PR
Proofreading

Debbie Wicks
Joan and John Wilson

FRIENDS OF THE EASTBOURNE HOSPITAL

Registered under the Charities Act 1960 (220592) and affiliated to ATTEND
(formerly the National Association of Hospital and Community Friends)

Patron
THE BISHOP OF LEWES

EXECUTIVE

President
DR PETER NASH

Vice-President
DR JOHN SURTEES

Chairman
DR HARRY WALMSLEY

Vice-Chairman
VACANT

Hon Treasurer
MR PETER SKILBECK

Assistant Treasurer
MR ROGER SMALLEY

Secretary
MRS SUE DUFFELL
MRS DEBBIE WICKS

Shop Manager
MRS SUE HITCHEN

Assistant Shop Managers
MRS TRACIE SHEPHERD
MRS RAI HITCHEN

Education Officer
MR PETER RIMINGTON

Friends of the Eastbourne Hospital, District General Hospital, Kings Drive,
Eastbourne, East Sussex, BN21 2UD (Tel. No. 01323 438236)
e-mail: esh-tr.friendsdgh@nhs.net www.friendsdgh.org.uk

Committee Members

Mrs S Boyce-Sharpe, Mrs A Caffyn MBE, Mrs R Cameron, Mrs M Crumbie
Mrs T Hamblin, Mr A Holter, Mrs C Lock, Mrs C Naylor, Mr H Parker
Mrs G Perry, Mrs B Phillips, Mrs G Woolley

Hon Solicitor: Mr Glendon Stone

Auditors: Watson Associates, Chartered Accountants

CHAIRMAN'S REPORT

So far a lot has already happened in 2018 and a lot more things are planned. The Radiotherapy Unit had its official opening on 26 February, where I was proud to see the sign celebrating the Friends contribution to the Unit of a CT scanner. The Unit really is fabulous and is already offering a great service for the people of Eastbourne who are unfortunate enough to require treatment. Funds are still coming in for Radiotherapy and in March I received a cheque for £750 from the Harbour WI. You, the population of Eastbourne, never fail to astound me with your generosity to the Friends and therefore the hospital.

In early March the Friends held a wine tasting called the "Battle of the Bottles" where Henry Butler from Butler's Wine Cellars and Tom Surgey from Ridgeview, served different wines they had chosen and we had to vote on our favourites. Henry won 2:1. All enjoyed the fun filled evening whilst a total of £470 was raised for the Friends.

The summer evening lectures for the public are planned for May, July and September. We are looking forward to hearing from Anita Smith who runs the swallowing clinic for the Speech and Language service and Dr Phil Mayhead on the latest advances in gastroenterology, including the new service that he will be providing with a scope the Friends have recently agreed to purchase. The final talk in September will be from Dr Andrew Marshall from cardiology, who will talk about the latest advances in his specialty.

This year is an historic year for both the NHS and the Friends as both were formed 70 years ago. To celebrate, the Friends are holding an anniversary dinner in April, the month the Friends were formed in 1948. In May we are honoured to be hosting a Royal Visit and unveiling of a celebratory plaque by Princess Alexandra, who opened the hospital back in 1977.

Lastly, in this issue, I wish to continue to celebrate a volunteer. Mike Sibbering has been responsible for accounting for all the Open Garden takings for almost 20 years. Each week during the season he collects, counts and banks the day's takings and produces a comprehensive summary for the team and for the Friends Treasurer, Peter Skilbeck. Mike also arranges a Christmas lunch for the Open Garden volunteers, which is always well attended and gives the team a welcome opportunity to meet and catch up. Mike is another example of someone who works behind the scenes to help support the Eastbourne DGH and the work of the Friends.

Harry Walmsley



If you would like to leave a Legacy in support of the
FRIENDS OF THE EASTBOURNE HOSPITAL
ask your Solicitor to include it in your Will

Leaving a gift to charity in your will is an amazing
way for your generosity to last beyond your own
lifetime

Office staff will be pleased to provide
additional information or to help in any way

The Friends Office
Eastbourne DGH, Kings Drive, Eastbourne. BN21 2UD

01323 438236
email: esh-tr.friendsdgh@nhs.net
www.friendsdgh.org.uk

WILL WRITING SERVICE

Usual fee per Will £125 plus VAT

Free Wills Brochure available on request

(Lasting Powers of Attorney from £235 plus VAT)

Tel: (01323) 460395

Barry & Co Solicitors

Bay Terrace, Pevensey Bay, East Sussex, BN24 6EE

PROBATE ADVICE

No obligation legal advice on
initiating Probate and Estate Administration

Tel: 01323 768382
or contact: rachel@barry&co.org

GRAND DRAW 2018

This year's Grand Draw is taking place at 4 pm at our Cream Tea and Summer Fair at East Dean and Friston Village Hall on Sunday 17 June. For your chance to win the first prize of £1,000 or any of the other great prizes including 2 tickets to the Aegon International Tennis Tournament, please complete and return the tickets that are enclosed with this magazine.

Let us know in the Friends Office if you would like more tickets for yourself or to sell to friends and family and we will get them to you. Alternatively you can pick them up from one of our shops or notice boards when you are next in the hospital or from the ticket sellers manning the Grand Draw table. Also, Sue Duffell will be on the Friends Stall at any of the Open Gardens leading up to the Draw and she will be able to supply you with additional books of tickets. Sue will also be happy to take your ticket stubs and payment, to save you posting them or bringing them in to the hospital.

We would like to thank everyone who has already volunteered to sell raffle tickets in the foyer of the hospital; every ticket sold is a pound towards our cause. We are still recruiting volunteers for May and June, so please do get in touch if you can help.

Debbie Wicks

Celebrating 50 years
Eastbourne Gilbert & Sullivan Society Presents

The Yeomen of the Guard

Devonshire Park Theatre Eastbourne

Thursday 10 May – Sunday 13 May

Evenings at 7.45 pm

Matinees on Thursday, Saturday & Sunday at 2.30 pm

Ticket Prices: £16 all seats

Under 16s: £5

Concessions £1 off

Box Office: 01323 412000

www.eastbournetheatres.co.uk

Bed & Breakfast from £50

OCKLYNGE MANOR



Mill Road, Eastbourne BN21 2PG
www.ocklyngemanor.co.uk
ocklyngemanor@hotmail.com
Tel: 01323 734121

“TWEED”

The Emilie Galloway Home of Rest

Manager: Tess Howell



Situated near the Grand Hotel, local shops and the sea front, Tweed is a superior quality care home for 21 residents run by a charitable trust established in 1930. The trust seeks to keep its fees to a minimum and tailored to the needs of the resident, whilst providing a high standard of care and accommodation.

01323 733223

Email: info@tweedcarehome.co.uk www.tweedcarehome.co.uk
Tweed, The Emilie Galloway Home of Rest
8/10 Silverdale Road, Eastbourne BN20 7AL

OPEN GARDENS 2018

Last year's Open Gardens raised a record £24,178 before expenses, towards the Eastbourne DGH and a CT scanner for Radiotherapy. We are already looking forward to this year's season which starts on Wednesday 16 May 2018 at Lime Kiln Farm, Chalvington. Your Open Garden brochure is enclosed with this magazine so that you can put the dates in your diary.



In total we have 18 fabulous gardens open on 10 different days for you to visit. Entry is by donation and they will be open whatever the weather. All of our gardens are special and we are so grateful to the owners for letting us open them to our members and to the public. Do bring your friends and family along and enjoy a great day out in beautiful surroundings. There will, of course, be a range of our favourite stalls at each garden where you will be able to buy books, plants, cakes and gifts. Coffee, tea, soft drinks and delicious homemade cakes are served at all of gardens. If you have cakes, produce or plants to donate you can bring them along to any of our gardens.

Once again a few of our gardens are open all day where visitors can enjoy a ploughman's lunch and stay for the whole day. We hope that you will take advantage of the opportunity of a whole day out and the chance to spend some extra time in some truly delightful gardens.



We are very pleased to have 3 dates when we are opening gardens in Eastbourne. You can visit gardens in Meads on 30 May, Eastbourne on 20 June and Summerdown on 11 July, where one of the gardens you can enjoy is Andrew Norwood's Japanese influenced garden in Pashley Road, last visited in 2014 and pictured here.

We look forward to seeing you during the season – fingers crossed for some sunny Wednesdays!

Debbie Wicks



Quality care and support in your home
from 1 hour visits to 24 hour live-in care

Our services in Eastbourne include:

- Companionship
- Transportation and errands
- Meal preparation
- Light housekeeping
- Help with washing and dressing
- Personal care
- Medication reminders
- Post-operative support
- Holiday and respite cover
- Specialist dementia care

And much more...



Contact us for more information

☎ 01323 414 658

✉ eastbourne@rightathomeuk.com

🌐 www.rightathomeuk.com/eastbourne



SURRIDGES
ESTATE AGENTS

INFO@SURRIDGES.CO.UK
01323 406 440
SURRIDGES.CO.UK



Looking to sell? We are your professional and local family run estate agents. For every property completion we will make a donation to The Friends of Eastbourne Hospital and Arthritis Research UK.

- + Competitive selling fee from 0.5% + VAT (minimum fee applies)
- + Over 27 years local experience
- + Propertymark Protected & Members of the Ombudsman
- + Free market valuations
- + Free probate valuations
- + Full internet exposure (Rightmove, Zoopla, Primelocation)
- + Exposure to social media (Facebook, Twitter, Instagram)
- + Personal attention to you and your property

BATTLE OF THE BOTTLES

On the evening of 9th March our team of volunteers transformed the staff restaurant into the venue for the Battle of the Bottles, which was enjoyed by nearly 70 guests who turned up despite some dreadful, wet weather.

This was a wine tasting with a difference as Henry Butler from Butlers Wine Cellars in Brighton went head to head with Tom Surgey from Ridgeview to convince the tasters that their choices were the best. They had four minutes each to talk about each wine, which they both did in a very humorous and entertaining way. On occasions the time keeping was a little 'flexible' as once they were in their flow, they were not keen to stop! The voting may have been a little questionable as both speakers were so convincing that it is possible that some tasters felt there was so



little to choose between the two that it was best for vote for both.

After the closely fought contest Henry was declared the winner and can be seen here receiving the cup from Friends Chairman, Dr Harry Walmsley.

Sue Duffell

MIXED DOUBLES TENNIS TOURNAMENT

SUNDAY 13 MAY 2018
from 1.30 pm – 5.30 pm



ENTRY £15 PER ADULT
to include a splendid tea



Advanced booking is essential
(01323) 438236

Tennis partner not required



THE JOY OF EVERY DAY

The Life you Want, The Care you Need



When it comes to senior care, Sunrise continues to set the standard. Our expertly trained staff and the high quality personalised care we offer are changing the way people think about senior living.

Our tailored programmes of care, a huge range of daily activities, weekly outings and passionate, expertly-trained staff all come together to create a senior living experience unlike any other.

Whether it's assisted living, nursing or our ground-breaking Reminiscence Neighbourhood bringing comfort to those living with memory loss, everything we do is born from a commitment to providing only the very best care to seniors.

Call us on **01323 888682** to find out more

Sunrise of Eastbourne, 6 Upper Kings Drive, Eastbourne, East Sussex BN20 9AN

SunriseEastbourne.co.uk



STAMPS AND POSTCARDS

I have had some more coins donated and they are now safely at Tunbridge Wells and hopefully will be auctioned soon. I am also waiting for my postcard dealer to visit soon as I have five shoe boxes of cards for him to look at. Stamp sales continue to be fairly good, but sadly today's youngsters don't seem to be as interested in collecting as we were when we were young.

Thank you again for all your donations, which are all sold to help the Friends exciting projects. I hope to see all my regulars at the Cream Tea in June!

June Tickner

DINE AROUND THE WORLD AT THE BELGIAN CAFÉ

At the beginning of February we held one of our very popular Dine Around the World evenings at the Belgian Café on Eastbourne seafront, raising the grand sum of £962. Guests enjoyed a variety of the café's favourite dishes including mussels, which is what they are well known for.



The Belgian Café has its own Microbrewery producing a selection of Belgian Beers. They generously donated £1 for every bottle bought on the night and a tour of the brewery as a raffle prize.

Our grateful thanks to Greg, Stephane and their team for working so hard to ensure that we all had such a good evening.

Debbie Wicks

FLOWER SHOP

The Flower Shop volunteers have been putting in a lot of extra hours recently to make sure that they made the most of opportunities generated by Valentine's Day, Mother's Day and Easter. They have had a table in the Arndale Centre and in the hospital foyer to help maximise the potential of these three special occasions.

All the extra effort has paid off and the extra sales have resulted in another £750 on top of the usual Flower Shop takings, which is a fantastic achievement. We would like to thank all the volunteers for their hard work and the extra time that they have put in.

If you would like to join the team, please contact the office or pop in to the shop and talk to the volunteers.

Debbie Wicks

You are invited to join us for a

Barn Dance

& Hog Roast

Live music from **DED EFFNIK**
caller **Tony Dunn**

Saturday 30 June 2018

6.30 pm for 7.00 pm

£18 per person

**at Carter's Corner Farm,
Cowbeech**

Tickets available from Friends office

Tel: 01323 438236

email: esh-tr.friendsdgh@nhs.net



70 YEARS ON....

On the 30 April 1948, shortly before the introduction of the NHS, the Patients Association was established, as it became apparent that NHS resources would not be enough to meet the cost of the necessities and amenities that would be required for the future. In 1952 the charity changed its name to The Friends of the Eastbourne Hospitals, supporting eight local hospitals. All Saints Hospital joined the group in 1959.

In the beginning the charity was asked to purchase a wide variety of things including in 1949 a radiogram for the maternity hospital (pictured right) and in 1953 a spinal carriage for Downside Hospital. A minute extract from 1956 stated that: "It was noted with regret that the favourite budgie at Downside Hospital had passed away and the charity's secretary was instructed to arrange for his replacement." One year's maintenance for a budgie was 2/6d.



Money was raised in a wide variety of ways which included a Flag Day that continued until 2011. This is a picture of the first Flag Day which took place in 1954.

As well as providing equipment for the hospitals the charity also provided services to the patients. For instance it was reported in the local paper that: "Of the many ways in which the Friends of the Eastbourne Hospitals contribute to the happiness of patients – no service is appreciated more by the long-stay patients of Downside than the outings on which they are taken by private hire car throughout the summer." Another service was to report patient dissatisfaction to the Hospital Management Committee. One complaint was that there was no one to take the betting slips....not a service we provide today!

In 1976 the Eastbourne DGH was opened and in 2013 the charity changed its name to the Friends of the Eastbourne Hospital (FoEH) to reflect the fact that all the hospital specialities are now under one roof and not spread across nine different hospitals.

In 2018 the FoEH has almost 2,000 members and has donated over £16 million to support the patients, staff and visitors to our hospital(s) since 1948. The largest purchase to date was the Da Vinci Surgical Robot in 2015 which cost £1 million – how time's change!



Debbie Wicks

NEWS FROM THE OFFICE

As always, the first part of the year has very much been a planning time for us here in the office. There are so many events coming up in the next few months that we thought we should have a round-up of them here to make sure that you don't miss any!

From the front cover you will know that the Friends of Eastbourne Hospital will be celebrating their 70th anniversary on 30 April 2018, as the charity was formed a few months before the birth of the NHS. To celebrate this we are very proud to announce that Her Royal Highness, Princess Alexandra, will be visiting the hospital on Thursday 10 May to unveil a commemorative plaque, marking the occasion. We are particularly delighted to be welcoming Princess Alexandra for this event as she opened the Eastbourne DGH back in 1976 (pictured left). If you would like to see our Royal Visitor please do come to the hospital and wait outside the Day Surgery Unit entrance, where you will be able to see her arrive and help us



celebrate 70 years of fundraising to support healthcare in Eastbourne.

Our Mixed Doubles Tennis Tournament is being held on the afternoon of Sunday 13 May. Please get in touch with us in the office if you would like to enter. It's only £15 pp for a fun afternoon's tennis and a splendid tea. You don't need a doubles partner, but booking is essential.

The Open Gardens are starting on 16 May and continue weekly until 18 July. Your lovely, colourful brochure is enclosed with this magazine and we hope to see you at some of the lovely gardens being opened on our behalf this year.

Rosemary Cameron's Coffee Morning on Thursday 17 May is at a new venue, so please do make a note of the address if you are planning to come (see advert on page 21). Rosemary will be collecting donations of new toiletries and gifts for the Bathroom Stall at the Summer Fair in June.

Anita Smith, who is a Speech and Language Therapist, is giving our first Education Lecture of the year on Thursday 24 May entitled: "Have your cake - but can you eat it?" when she will tell us about the use of endoscopes for assessing patients with swallowing difficulties.

The Cream Tea and Summer Fair is at East Dean Village Hall on Sunday 17 June, which is Father's Day. See the advert on page 1 for details. If you have any donations for the stalls, please let us know. Cakes and

preserves can be brought along on the day or to the FoEH Shop the day before, by 4pm. It's always a lovely afternoon, so do join us.

The Grand Draw will take place at the Cream Tea and Summer Fair at 4 pm. Do make sure that you have returned your ticket stubs and payment by then to be in with a chance to win a great prize.

We are having a Barn Dance and Hog Roast on Saturday 30 June at Carter's Corner Farm – and yes, it will be in a real barn! This event is only £18 pp and promises to be great fun. The live music will be provided by Ded Effnik and Tony Dunn will be the caller. A delicious Hog Roast will be provided by Swine Dining.

Michael and Pippa Logan are holding a garden party at their home in Seaford on Sunday 1 July from 11.30 am – 5 pm at 31 Sutton Avenue, Seaford, BN25 4LH and this year the FoEH will be one of the benefiting charities. Visitors can listen to a Jazz Band with their ploughman's lunch and the Seaford Silver Band will be performing in the afternoon. As well as this there will be several stalls including: cakes, plants, tombola and books, plus a raffle. If you have any donations please contact the Friends Office on 01323 438236 or email Pippa at: pippa.logan@virgin.net.

Our second Education Lecture is being given by Dr Phil Mayhead, Consultant Gastroenterologist, who will be giving a talk on Gastroenterology on Thursday 5 July.

Our next quiz will be in November. If you would like to enter a team we would suggest booking your place as soon as you see the date advertised. The quiz in April sold out very quickly and many people were disappointed – don't let that happen to you!

We hope that you will join us at some of these events and look forward to welcoming old friends and new.

We have had several enquiries from potential new volunteers, many of whom are now on board either in the shops or helping with the trolley rounds. There are still a few opportunities to help in the Flower Shop. You do not need to have floristry experience, as there are other ways you can help. Please call us in the office if you would like to know more.

Organising our 70th celebrations has given us the opportunity to look back at some of our archive records and reflect on how much we have been able to achieve. If anyone has any interesting photos, facts or anecdotes about the Friends do let us know.

Sue and Debbie



HAIR BIJOUX

Hair Extensions and Hair Replacement Specialists

Oscar's Hair & Beauty
Tel: 01323 746644
Oscar's Hair Bijoux
26 Cavendish Place
Eastbourne
East Sussex
BN21 3JA
www.oscarshb.com

HAIR REPLACEMENT for hair loss

*Alopecia, Baldness,
Thinning Hair,
tricholotimania, etc...*

**Cutting and
colouring – hair
extensions**
also available in
our salon

All services by
appointment
only. Please
phone
01323 746644
or 07939
017866

Hair Loss does not
have to be a problem
Regain confidence!

*Don't delay,
call us today!*



Hairdreams®
THE ART OF HAIREXTENSION

hot**hair**

ghd

L'ORÉAL

NATURAL
image

FUNDRAISING AND DONATIONS

Donations have come in through BT MY Donate where people have completed marathons and other outdoor challenges in memory of lost loved ones. Setting up a fundraising page on the website at www.btmydonate.com/charities/friendsoftheeastbournehospital is very easy and a perfect way of collecting money.

Donations in lieu of funeral flowers contribute thousands of pounds to our funds throughout the year; these funds are used to provide facilities, equipment and amenities for the EDGH. In January, the family of Joan Hale, who was a loyal trolley volunteer for many years, nominated the FoEH to be the recipient of in lieu donations at their mother's funeral. We are grateful to them and to other families who choose the FoEH at a difficult time. Another way that bereaved family and friends support the hospital is by using the Friends Flower Shop to provide funeral flowers. Our flower arrangers are well-known for their beautiful creations, which are bespoke, lovingly made and very good value. We also have a kind volunteer who will deliver arrangements to local funeral directors, providing a personal service.

Recently the Hospital Chaplain officiated at a funeral where there was no next of kin and kindly donated his fee to the Friends.

We are grateful to the local solicitors that participated in the Free Wills Scheme for our benefit last year. It takes a while for these donations to filter through, but we are grateful to everyone who made a donation this way, including those that chose to remain anonymous.

Sometimes we have donations where the donors have specifically asked us not to send a receipt, or who have chosen to remain anonymous. While we are not able to thank them personally in a letter, we value all donations and hope that the donors see this magazine and know how much their thoughtfulness is appreciated.

We would like to thank everyone who took advantage of the envelopes for recycling used ink cartridges that were included with the last magazine. The response has been very good and the amount raised for the Friends in the first quarter of the year is so far over £130. This figure goes up daily. You can also recycle old mobile phones for us with Recycle4Charity. These have to be sent in the larger collecting boxes that we have in the office, not in an envelope. So if you have a phone to recycle please drop it into the shop or Friends Office.

Sue and Debbie



Dementia Care Specialists

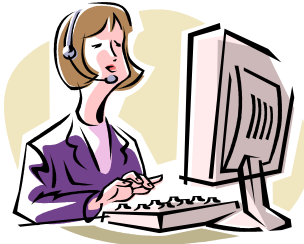
Providing care and support in your local community

- Home Care
- Respite Care
- Day Care
- Residential Care

To talk to us about Meads Care,
or for any questions on care please contact us

t: 01323 732632 e: enquiries@nifinaraltd.com www.meadscare.com

SUSSEX SECRETARIES



**DO YOU NEED SECRETARIAL HELP
FOR YOUR BUSINESS OR IN YOUR HOME?**

Call us to discuss ways in which we can help you

Tel: 01424 892463

Mobiles: 07940 886123 or 07985 192059

or visit our website www.sussexsecretaries.co.uk
to see what services we can offer you



Rosemary Cameron would like to invite you to

A COFFEE MORNING

Thursday 17 May 2018
10 am – 12 noon

35 COMPTON DRIVE, EASTBOURNE BN20 8BX
Please note change of address

Donations of £1 for coffee and biscuit



Raffle & Stalls including: Homemade Cakes and Preserves, Books, Jewellery & Plants

PLEASE BRING ALONG ANY UNWANTED NEW TOILETRIES
for selling on our Bathroom Stall

at the **FoEH Cream Tea & Summer Fair**
on Sunday 17 June 2018 from 1.30 pm
East Dean and Friston Village Hall

Raising money for the Eastbourne DGH and
£250,000 for our Trio of Special Projects for 2018

Please come along and do bring a friend

GIFTS AND DONATIONS

Donations in lieu of Flowers

During the past three months we have received with gratitude donations totalling £2,428.40 in memory of:

Robert Braithwaite, Barbara Brown, Charles Finch, Michael Hall, David Kemp, Brendan Mewett, Joyce Newton, Joan Taylor, Jean Ticehurst, Gloria Town, Jim Woods

Legacies

During the past three months we have received with gratitude, legacies from the estates of:

Audrey Battershell, Donald Chandler, Shirley Greenstreet, Magdalena Hunter, Peter Miller, Irene Silcock, C J Wroughton

Recently agreed gifts to the Eastbourne District General Hospital

Bladder scanner for Paediatrics	£4,244
IT Beds for Critical Care x 3	£10,871
Bedside workstations Critical Care x 3	£3,356
Changing room benches for Facilities department	£3,000
Furniture for staff areas in Physiotherapy department	£3,051
2 x laryngoscopes for ENT	£15,635
Flexible cystoscope for Women's Health	£25,600
Couch for Women's Health	£21,386
Echo endoscope for Endoscopy	£80,510
Gym equipment for Psychiatry	£6,651
Framing for artwork in Radiotherapy	£845
Additional cataract software for Ophthalmology	£4,000
Grinding machine for Podiatry	£2,029
Total	£183,207

TRUST NEWS

This winter the NHS has been in the national spotlight as it deals with significant operational pressures. Locally it has been very busy, with admissions to hospital and attendance at A&E up on last year. Our staff deserves great credit for their commitment and professionalism in maintaining a high standard of care throughout this challenging period.

A new CT scanner, substantially funded by the FoEH, is part of a major redevelopment of the Radiology Department at the Eastbourne DGH that will include another new CT scanner and associated building work. This will help transform the care of local patients and further develop the Trust's excellent Stroke and Cancer care whilst providing Cardiac scans in a single heart beat due to the latest technology that it will be equipped with.

The Secretary of State for Health and Social Care, Jeremy Hunt, visited the hospital in February to share with staff his plans for improving patient safety and reducing avoidable harm across the NHS.

Work is well underway on an extensive programme of refurbishment to the Maxillo Facial and Orthodontic department at Eastbourne DGH. The work, substantially funded by the Friends, includes a total refurbishment of four clinical treatment rooms and the installation of new equipment, including dental examination chairs and operating lights.

An Eastbourne patient is the first in the UK to be implanted with an innovative Cardiac device to modulate the heart's beat. This new device sends the heart messages to modify the heart cells as they beat in process known as Cardiac Contractility Modulation. We are pleased to be the first cardiac unit in the UK to implant it.

Finally, the NHS celebrates its 70th anniversary on 5th July 2018. This landmark occasion is being celebrated nationally and we would like your memories and reminiscences of those that have worked in or been treated by the NHS over the last 70 years. Please share your memories and photos by email to esh-tr.communicationsesht@nhs.net or by post to Communications, Eastbourne DGH, Kings Drive Eastbourne BN21 2UD. If you're sending any original photographs and would like them returned please include your name and address. You can also share your memories on its social media channels, Facebook or Twitter using #ESHTNHS70.

Simon Purkiss, Communications

HELP US TO HELP YOU CONTACTS

HOSPITALITY EDITORIAL TEAM If you would like to advertise in this magazine please contact: The Friends Office, Eastbourne District General Hospital, Kings Drive, Eastbourne, BN21 2UD.

Tel No. 01323 438236 or email: esh-tr.friendsdgh@nhs.net

PHOTOGRAPHS All contributions and photographs are welcome and can be sent to the Editorial Team at esh-tr.friendsdgh@nhs.net

HOSPITALITY DISTRIBUTION Stamps and envelopes for the attention of Mrs Sue Duffell, The Friends Office: 01323 438236

HOSPITAL RADIO PROGRAMMES For requests for music and dedications on Hospital Radio Programmes please call the Radio DGH Studio on 01323 435748 or visit their website at: www.radiodgh.com

VOLUNTEERING Please contact the Friends Office on 01323 438236 if you would like to volunteer in one of the Friends shops or for the Trolley Service. If you would like to volunteer elsewhere in the DGH please contact: Voluntary Services Office, Eastbourne DGH, Kings Drive, Eastbourne BN21 2UD Tel No. 01323 417400 ext 4880

ITEMS WE COLLECT please see page 29 for a list of what we collect

FOR MORE INFORMATION about the FoEH and how you can support us please visit our website at: www.friendsdgh.org.uk

Visit the Friends' Shop

in the DGH Foyer and discover the great variety of goods on sale

Confectionery, Drinks, Toiletries, Toys, Stationery, Nightwear, Slippers and Bags plus a great selection of Books, Cards, Magazines and Newspapers

OPEN MONDAY- FRIDAY 9.00 am – 6.30 pm

SATURDAY 10.30 am - 4.00 pm AND SUNDAY 1.30 - 4.00 pm

Tel: 01323 - 647188

The Friends' also have the Corner Shop near The Restaurant and provide a Trolley Service to the wards

FRIENDS OF THE EASTBOURNE HOSPITAL

Registered under the Charities Act 1960 No 220592

Please enrol me as a Member.

I enclose the sum of/I have completed the Banker's Order form.

Annual Subscription	£	:	£10
Renewal of Annual Subscription	£	:	£10
Life Membership.....	£	:	£30
Donation.....	£	:	

£ _____

If you are a tax payer please complete the Gift Aid Declaration form overleaf.
The Friends' can reclaim tax on your membership subscription and any donation.

Please do not feel under any obligation, but if you can help in any of the following ways please tick the appropriate box.

- Delivering Hospitality.....
- Volunteer work in the DGH
- Help with fund raising activities.....

Mr/Mrs/Miss/Ms

Address

..... Postcode

Telephone Date

Email

Please return to Hon Membership Secretary
Friends of the Eastbourne Hospital
District General Hospital
Kings Drive
Eastbourne BN21 2UD

Tel 01323 438236

Data Protection Act 1998

Please note that the Charity uses computer systems to record membership information. Under the Data protection Act 1998, it is necessary for you to be informed of this. The information you provide on your application and renewal form will only be used by the Charity's officials and task holders to conduct Charity business and will not be supplied to outside bodies in any form. If you have any questions or concerns over the data held, please contact the Secretary.

GIFT AID DECLARATION

Boost your donation by 25p of Gift Aid for every £1 you donate
Gift Aid is reclaimed by the charity from the tax you pay for the current tax year.
Your address is needed to identify you as a current UK tax payer.

Please complete the information below and return it to:

The FoEH, Friends Office, Eastbourne DGH, Kings Drive, Eastbourne BN21 2UD

I confirm that I would like all my donations, past, present and future to:
FRIENDS OF EASTBOURNE HOSPITAL (Charity No: 220592)
to be treated as Gift Aid donations.

I am a UK taxpayer and understand that if I pay less Income Tax and/or Capital Gains Tax than the amount of Gift Aid claimed on all my donations in that tax year it is my responsibility to pay any difference.

My Details:

Title First name or Initial(s) Surname

Full Home address

..... Post Code

Date

Please notify the Charity if you:

* want to cancel this declaration

* change your name or home address

* no longer pay sufficient tax on your income and/or capital gains.

If you pay Income Tax at the higher or additional rate and want to receive the additional tax relief due to you, you must include all your Gift Aid donations on your Self-Assessment tax return or ask HM Revenue and Customs to adjust your tax code.

STANDING ORDER

To

..... Sort Code: A/c No.....
(Name and address of your Bank)

Please pay to Barclays Bank Plc (20-22-67) 9 High Street, Colchester CO11DA for the account of the Friends of the Eastbourne Hospital (No. 10039667) the sum of

£ : ()
(Amount in figures) (Amount in words)

on 20..... and thereafter on the 01 September each year until otherwise notified.

Signature Date.....

Full Name in Capital Letters (Mr/Mrs/Miss/Ms)

Address.....

..... Post Code

Registered Under the Charities Act 1960 No 220592

You are invited to our Educational Talks
Lecture Theatre, Education Centre, Eastbourne DGH

Tickets **FREE** to include parking

Please contact the Friends Office 01323 438236



Thursday 24 MAY 2018 at 7.00 pm

“Have your cake - but can you eat it?”

By Speech and Language Therapist

Anita Smith



Thursday 5 JULY 2018 at 7.00 pm

“Gastroenterology”

By DGH Gastroenterology Consultant

Phil Mayhead



CHRISTINE M. BARTON

m.e.a.ch. m.a.c.pod

HOME VISITING

FOOT HEALTH PRACTITIONER

TEL: 01323 502867



Care homes across Sussex

HORAM



ALFRISTON



POLEGATE



Chanctonbury Healthcare is a local provider of care and nursing homes for the elderly in East Sussex.

Chanctonbury Healthcare owns three beautiful homes in Alfriston, Polegate and Horam.

All our homes have a friendly and compassionate ambiance and we want everyone who stays with us to feel at home. We are committed to making sure all our residents live their lives to the full and have the choice to pursue whatever activities or hobbies they enjoy.

We offer not only Permanent stays but Respite or periods of Recuperation e.g. following a hospital stay.

We also offer Day Care for those who don't need full time care but would benefit from the social aspect and / or extra physical care e.g. bathing.

Finally when the time comes, we provide outstanding compassionate and skilled End-of-Life-Care.

Our highly qualified staff are passionate about treating every resident with the utmost dignity and compassion. We take great pride in the high quality care we give and work hard with our residents and their loved ones to ensure care is tailored to their wants and needs.

Visit our website chanctonbury-care.com or contact us if you would like to make an enquiry.



www.chanctonbury-care.com

All our homes are
CQC rating

Good

Inspected and rated by
Care Quality Commission



CHANCTONBURY
HEALTHCARE



Alfriston Court

Alfriston
01323 874140



Queenmead

Polegate
01323 487931



Oaklands Court

Horam
01435 813030

WE COLLECT



GREETINGS CARDS

Birthday, get well, sympathy, new home, greetings and thank you cards are collected and remade throughout the year. Easter and Christmas cards are collected for **6 weeks following the event**.



POSTAGE STAMPS AND POSTCARDS

All kinds of stamps are collected and sold to dealers, private buyers and via Eastbourne Auctions, who support the FoEH. Please do not remove stamps from postcards, which are sold separately.



KNITTING WOOL

Our volunteers make many items from donated wool including: baby clothes, toys and Twiddlemuffs.



HABERDASHERY ITEMS

Bits and pieces such as: ribbons, buttons, beads, textured fabrics to sew onto Twiddlemuffs and for card making.



PLASTIC MILK BOTTLE TOPS – any colour

These are recycled by FoEH volunteers and are made into everyday items such as traffic cones. Please **ONLY** bring in clean milk bottle tops.



SILK FLOWERS AND FLOWER BASKETS

The Flower Shop volunteers welcome donations of silk flowers and baskets that they can use for new arrangements.



NEW GIFT ITEMS/UNWANTED PRESENTS

New gifts are sold at our Summer and Christmas fairs. We also welcome donations of wines and spirits and chocolates etc.



SILVER, JEWELLERY AND BAGS

We collect any items including broken watches and jewellery. Eastbourne Auctions support the ladies by auctioning the more valuable items and selling bags to collectors.



NEW BATHROOM PRODUCTS

We take unopened/unused items such as make up, creams and soaps which we sell at our fairs.



INKJET PRINTER CARTRIDGES

We receive £1 for every inkjet cartridge recycled in one of our Recycle 4 Charity envelopes. Pick them up from the main shop.

HOW TO DONATE

Please bring your donations to the Friends Office or the Friends Shop, which is in the main foyer of the hospital. Alternatively, call the office on 01323 438236 and we will arrange for someone to pick it up from you.



Clockwise from top left:

Henry Butler and Tom Surgey at the Battle of the Bottles * Tom Chaplain opening the Radiotherapy Unit * Opening of the Radiotherapy Unit * Dine Around the World at the Belgian Cafe * Donation from the Harbour Women's Institute